



## COURTHOPE VILLAS, SW19

£1,450,000

Semi-Detached  
Four Bedrooms  
Two Bathrooms  
West Facing Garden  
Off-Street Parking  
Energy rating: d

@marshandparsons  
marshandparsons.co.uk

MARSH &  
PARSONS

# ABOUT THE PROPERTY

This is a four bedroom semi-detached period family home with a bay front reception room with a feature fireplace. The rear of the property has been extended offering a second reception room with a large kitchen/dining room opening onto a west facing garden.

On the first floor there are two double bedrooms and a family bathroom, with two further bedrooms and shower room on the second floor. The property further benefits from a guest WC on the ground floor, off-street parking and no onward chain.

Courthope Villas is well located to the amenities of Wimbledon Central shopping district and transport links





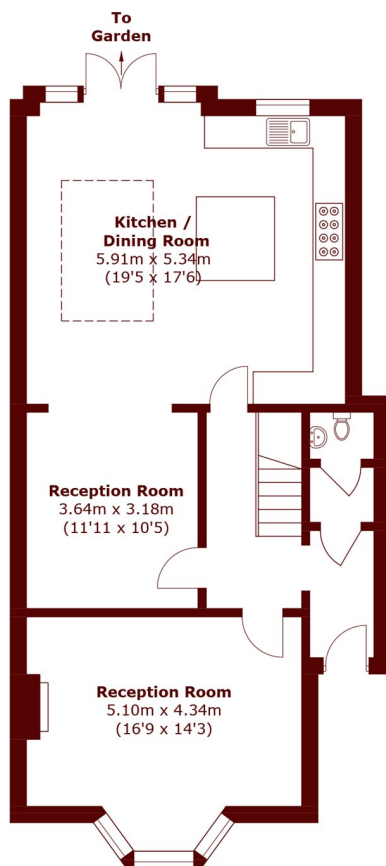


# FURTHER DETAILS

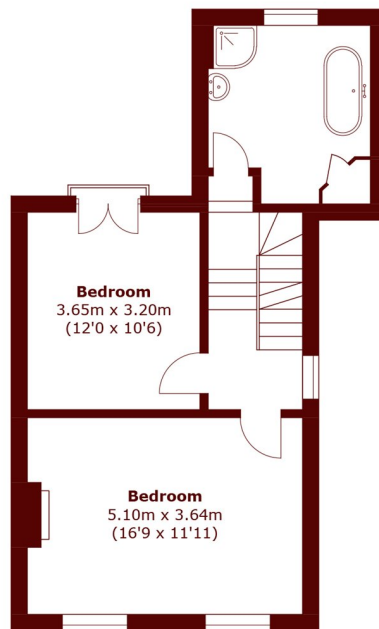
On the first floor there are two double bedrooms and a family bathroom, with two further bedrooms and shower room on the second floor. The property further benefits from a guest WC on the ground floor, off-street parking and no onward chain.



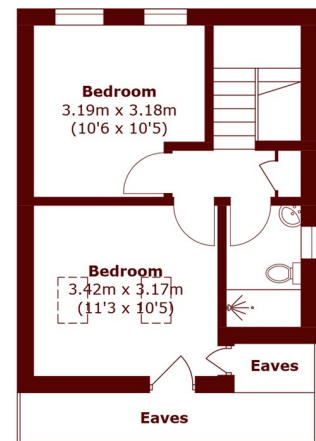
# STEP INSIDE COURTHOPE VILLAS



**Ground Floor**



**First Floor**



**Second Floor**

Total area (approx.): 157.8 sq. m (1,698.5 sq. ft)  
(Excluding Eaves)

**Wimbledon**  
020 8879 6660

Energy Rating: D We aim to make our particulars both accurate and reliable. However, they are not guaranteed; nor do they form part of an offer or contract. If you require clarification on any points then please contact us, especially if you're traveling some distance to view. Please note that appliances and heating systems have not been tested and therefore no warranties can be given as to their good working order

**MARSH &  
PARSONS**