



## RICHFORD STREET, W6

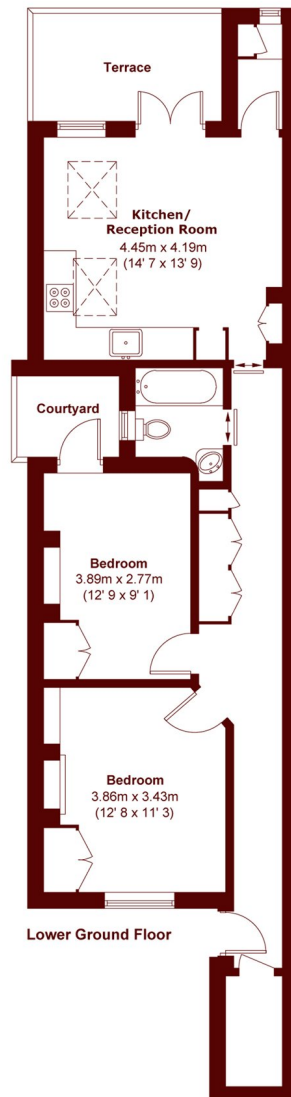
£700,000

A charming two-bedroom lower ground floor flat in a Victorian conversion on a quiet road near Brackenburg Village. The property is tastefully decorated throughout and benefits from a private garden,

Two Bedrooms  
Private Garden  
Lower Ground Floor

Tasteful Finish  
Excellent Location  
Brackenburg Village

# STEP INSIDE RICHFORD STREET



APPROX. GROSS INTERNAL FLOOR AREA 712 SQFT / 66.2 SQM  
APPROX. GROSS EXTERNAL COURTYARD AREA 22 SQFT / 2.1 SQM  
APPROX. GROSS EXTERNAL TERRACE AREA 74 SQFT / 6.9 SQM

**Brook Green**  
020 7605 7765

Energy Rating: We aim to make our particulars both accurate and reliable. However, they are not guaranteed; nor do they form part of an offer or contract. If you require clarification on any points then please contact us, especially if you're traveling some distance to view. Please note that appliances and heating systems have not been tested and therefore no warranties can be given as to their good working order

**MARSH &  
PARSONS**