



## BURWOOD PLACE, W2

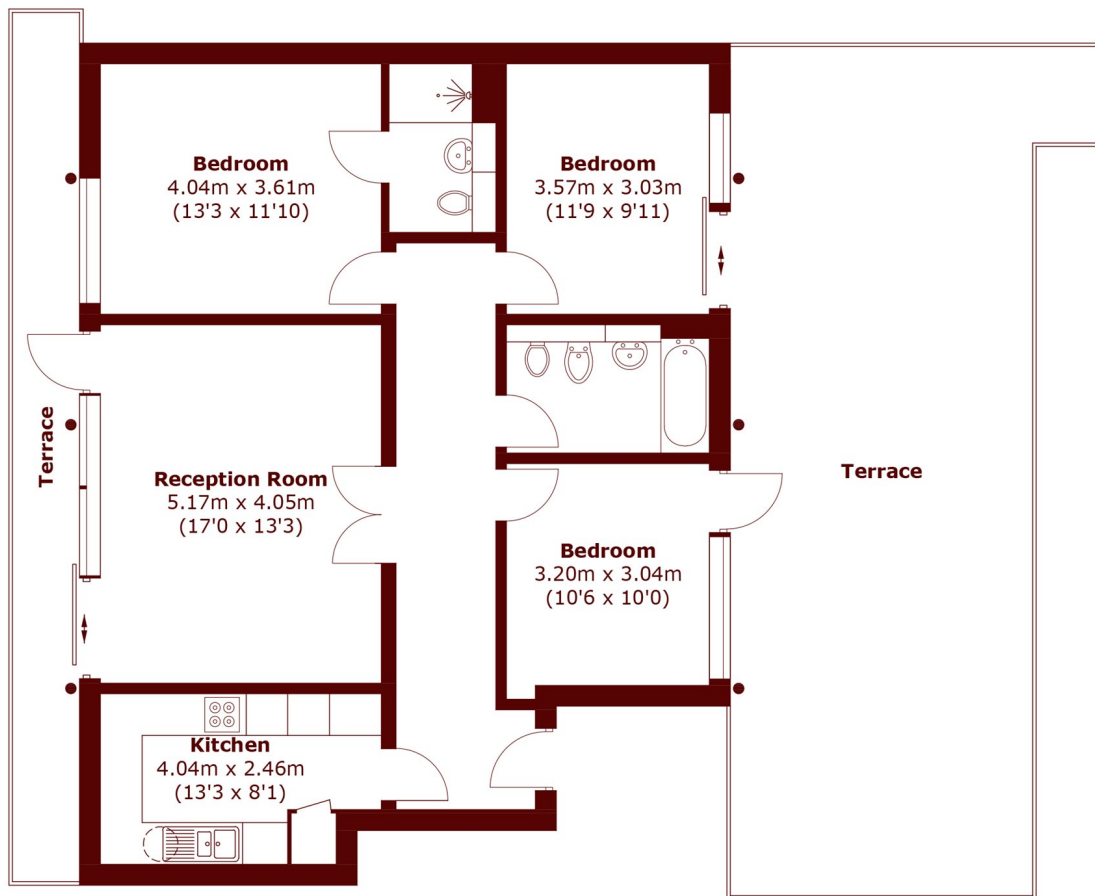
£5,000 per month

An incredibly spacious three double bedroom apartment with an impressive private terrace, set within a modern development just moments from Edgware Road, Marylebone, and the West End.

Three bedroom apartment  
Large private terrace  
Two bathrooms

Wooden floors  
Concierge / lift  
EPC - D

# STEP INSIDE BURWOOD PLACE



## Second Floor

Total area (approx.): 93.4 sq. m (1,005.3 sq. ft)  
Terrace (approx.): 67.2 sq. m (723.3 sq. ft)

Notting Hill  
020 7313 6910

Energy Rating: D We aim to make our particulars both accurate and reliable. However, they are not guaranteed; nor do they form part of an offer or contract. If you require clarification on any points then please contact us, especially if you're traveling some distance to view. Please note that appliances and heating systems have not been tested and therefore no warranties can be given as to their good working order

MARSH &  
PARSONS