



## GREENWICH QUAY, SE8

£2,250 per month

Modern riverfront apartment

Two double bedrooms

Two bathrooms

Off-street parking

Close to Greenwich centre

Energy rating: C

@marshandparsons  
marshandparsons.co.uk

MARSH &  
PARSONS



# ABOUT THE PROPERTY

A modern two bedroom, two bathroom apartment with a beautiful riverfront view.

Within a short walk away from Greenwich mainline and DLR stations as well as the Greenwich centre and all it has to offer.

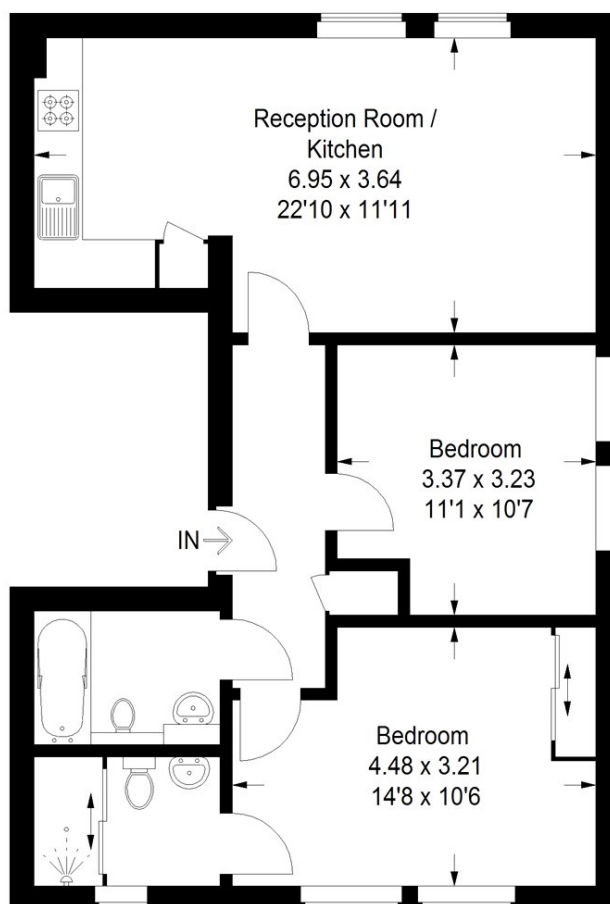


# STEP INSIDE GREENWICH QUAY

## Greenwich Quay, SE8

Approximate Gross Internal Area

63.4 sq m / 682 sq ft



### Second Floor

This plan is for layout guidance only. Not drawn to scale unless stated. Windows and door openings are approximate. Whilst every care is taken in the preparation of this plan, please check all dimensions, shapes and compass bearings before making any decisions reliant upon them. (ID770018)

Greenwich  
020 8815 2230

Energy Rating: C We aim to make our particulars both accurate and reliable. However, they are not guaranteed; nor do they form part of an offer or contract. If you require clarification on any points then please contact us, especially if you're traveling some distance to view. Please note that appliances and heating systems have not been tested and therefore no warranties can be given as to their good working order

MARSH &  
PARSONS