



SUTHERLAND AVENUE, W9

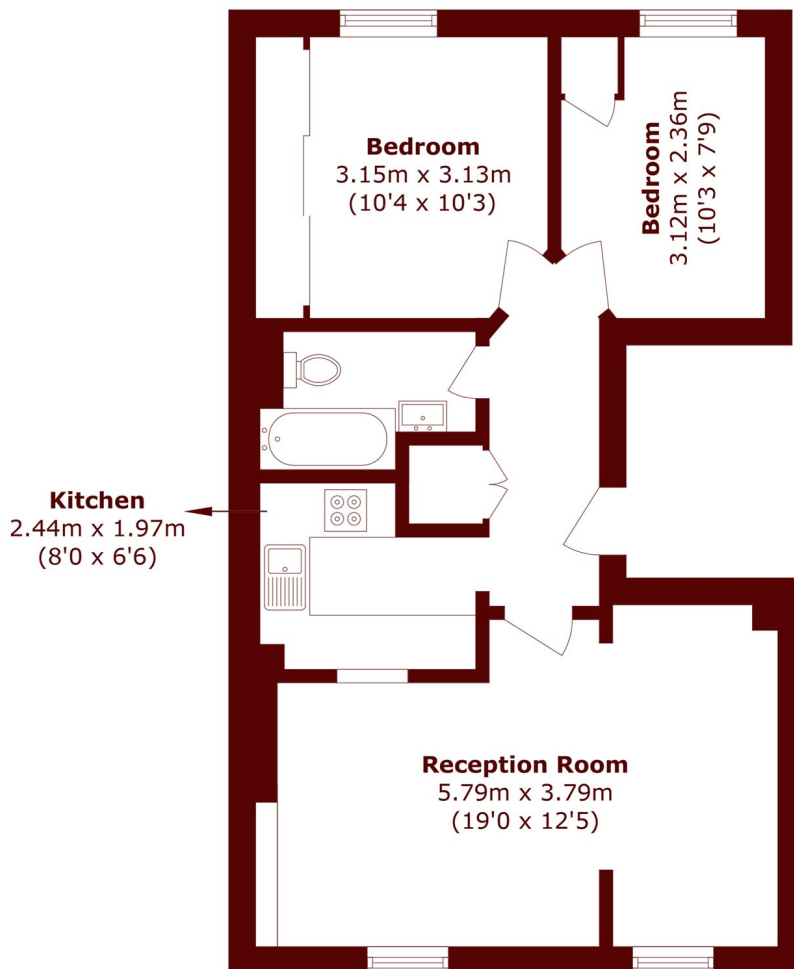
£500,000

A beautifully presented two bedroom apartment occupying the top floor of an attractive period conversion in the heart of Maida Vale.

Period conversion
Two bedrooms
Good condition

Share of freehold
Approximately 555sq ft
Chain free

STEP INSIDE SUTHERLAND AVENUE



Third Floor

Total area (approx.): 51.6 sq. m (555.4 sq. ft)

Little Venice
020 7993 3050

Energy Rating: We aim to make our particulars both accurate and reliable. However, they are not guaranteed; nor do they form part of an offer or contract. If you require clarification on any points then please contact us, especially if you're traveling some distance to view. Please note that appliances and heating systems have not been tested and therefore no warranties can be given as to their good working order

MARSH &
PARSONS