



TARNWOOD PARK, SE9

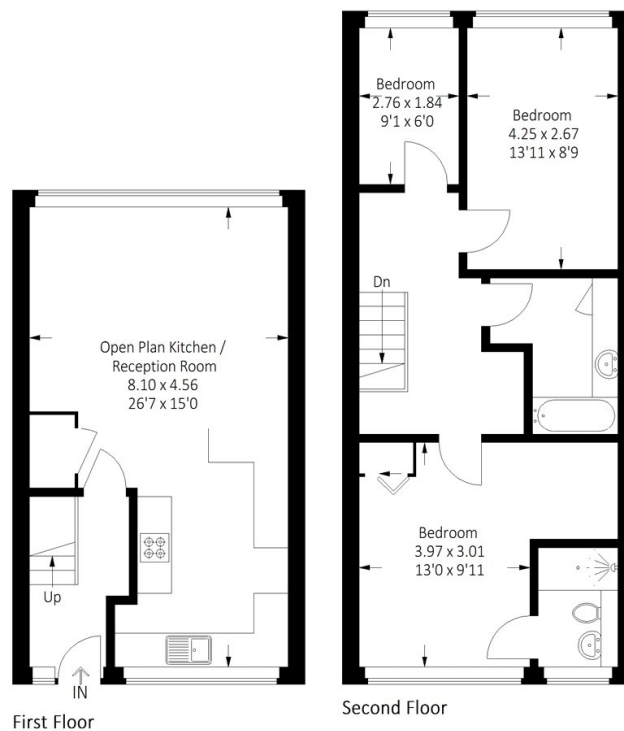
£2,200 PCM

A beautifully presented top floor maisonette located in the popular Tarnwood Park, with spectacular views overlooking the Royal Blackheath golf course.

Top floor apartment
Three double bedrooms
Two bathrooms

Lounge/diner
Fitted kitchen
Energy rating: c

STEP INSIDE TARNWOOD PARK



Approximate Gross Internal Area
88.2 sq m / 949 sq ft



Lee
020 8293 0454

Energy Rating: C We aim to make our particulars both accurate and reliable. However, they are not guaranteed; nor do they form part of an offer or contract. If you require clarification on any points then please contact us, especially if you're traveling some distance to view. Please note that appliances and heating systems have not been tested and therefore no warranties can be given as to their good working order

MARSH &
PARSONS