



## STOCKWELL PARK WALK, SW9

£500,000

Two Double Bedrooms  
Two Bathrooms  
Open-Plan Living  
Private Balcony  
Chain Free  
Energy Rating: B

# ABOUT THE PROPERTY

Set within an impressive modern development in the heart of Brixton, this spacious apartment offers over 750 sqft of high-spec living space comprising of two double bedrooms, two bathrooms and a stylish open-plan kitchen/reception area with direct access to a private balcony overlooking the quiet residential street at the rear of the development. Offered chain free with a long lease.

Stockwell Park Walk is conveniently located close to the vast array of independent shops, cafes and restaurants of central Brixton with easy access and a short walk to the excellent transport links of Brixton Underground Tube (Victoria Line) and National Rail services.

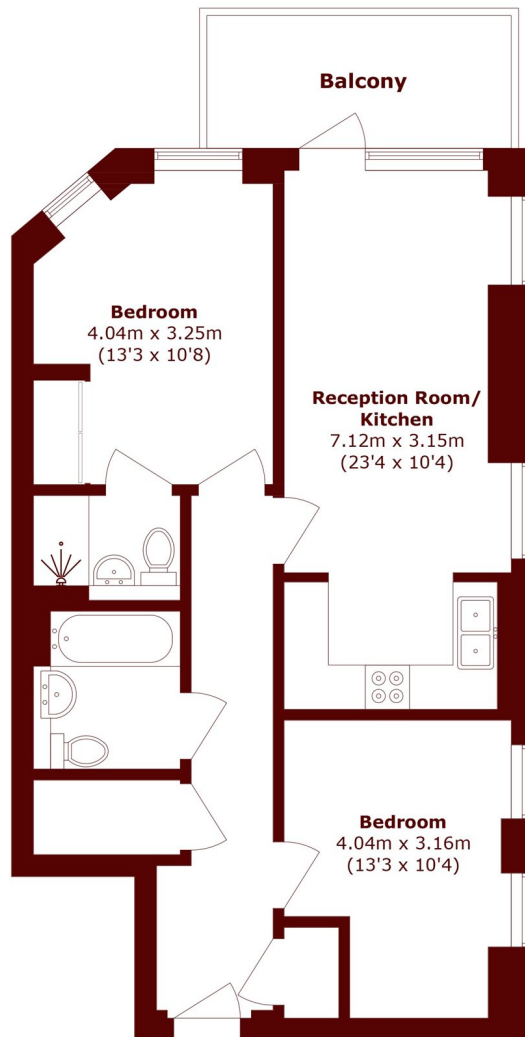








# STEP INSIDE STOCKWELL PARK WALK



Total area (approx.): 65.4 sq. m (703.9 sq. ft)  
Balcony area (approx.): 7.3 sq. m (78.6 sq. ft)

**Brixton**  
020 7733 4595

Energy Rating: B We aim to make our particulars both accurate and reliable. However, they are not guaranteed; nor do they form part of an offer or contract. If you require clarification on any points then please contact us, especially if you're traveling some distance to view. Please note that appliances and heating systems have not been tested and therefore no warranties can be given as to their good working order

**MARSH &  
PARSONS**