



## PURLEY AVENUE, NW2

£1,250,000

This superb, semi-detached property has been tastefully refurbished to a high standard throughout and is arranged over 2,065sqft. The ground floor comprises a spacious, open plan kitchen/reception with bifold doors

Five bedrooms

Off street parking

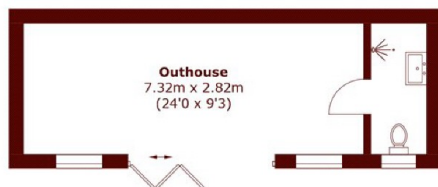
Arranged over 2,065 sq ft

Immaculate finish

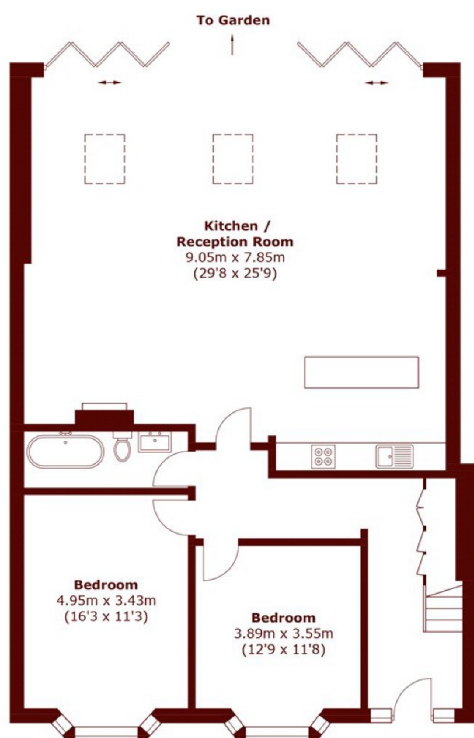
Large garden

Annexe with en suite

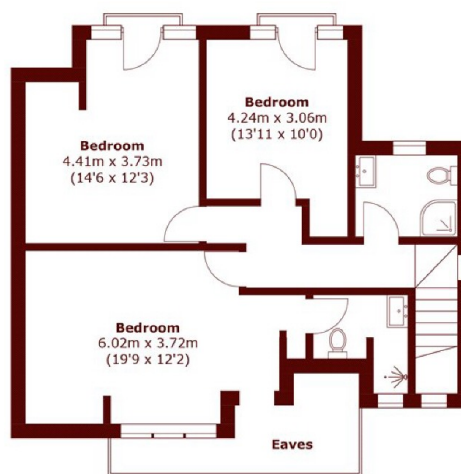
# STEP INSIDE PURLEY AVENUE



(Not Shown In Actual Location / Orientation)



**Ground Floor**



**First Floor**

Total area (approx.): 191.9 sq. m (2,065.5 sq. ft)  
Outbuilding (approx.): 24.9 sq. m (268 sq. ft)  
(Excluding Eaves )

**Willesden Green**  
020 8451 0420

Energy Rating: C We aim to make our particulars both accurate and reliable. However, they are not guaranteed; nor do they form part of an offer or contract. If you require clarification on any points then please contact us, especially if you're traveling some distance to view. Please note that appliances and heating systems have not been tested and therefore no warranties can be given as to their good working order

**MARSH &  
PARSONS**