

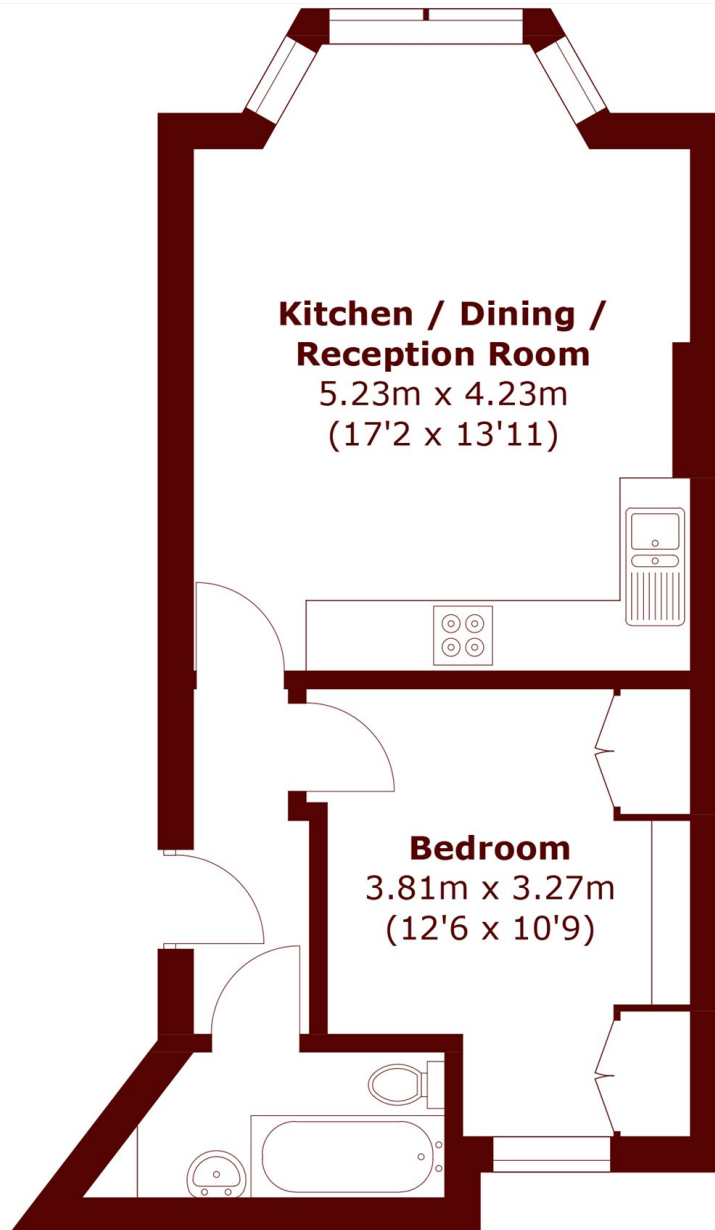


## Tooting Bec Gardens, SW16

£375,000



- One bedroom garden flat
- Front garden
- Nearby to Tooting Bec Common
- Period conversion
- Open plan kitchen/living
- EPC: D



Total area (approx.): 39.4 sq. m (424.1 sq. ft)

**Marsh & Parsons Streatham**

113-117 Streatham Hill,  
London, SW2 4UG  
020 8671 0171