



## DURWESTON STREET, W1H

£675,000

Upper floor with lift

Excellent condition

Off street parking

422 approx sq ft

Natural Light

Energy rating: c

@marshandparsons  
marshandparsons.co.uk

MARSH &  
PARSONS



# ABOUT THE PROPERTY

This perfectly formed apartment is in excellent decorative order and is presented in very good condition. It has a large and light bedroom with excellent fitted cupboards, double reception with dining area leading to the well fitted kitchen and a luxurious separate bathroom. The building has well presented communal areas and a lift.

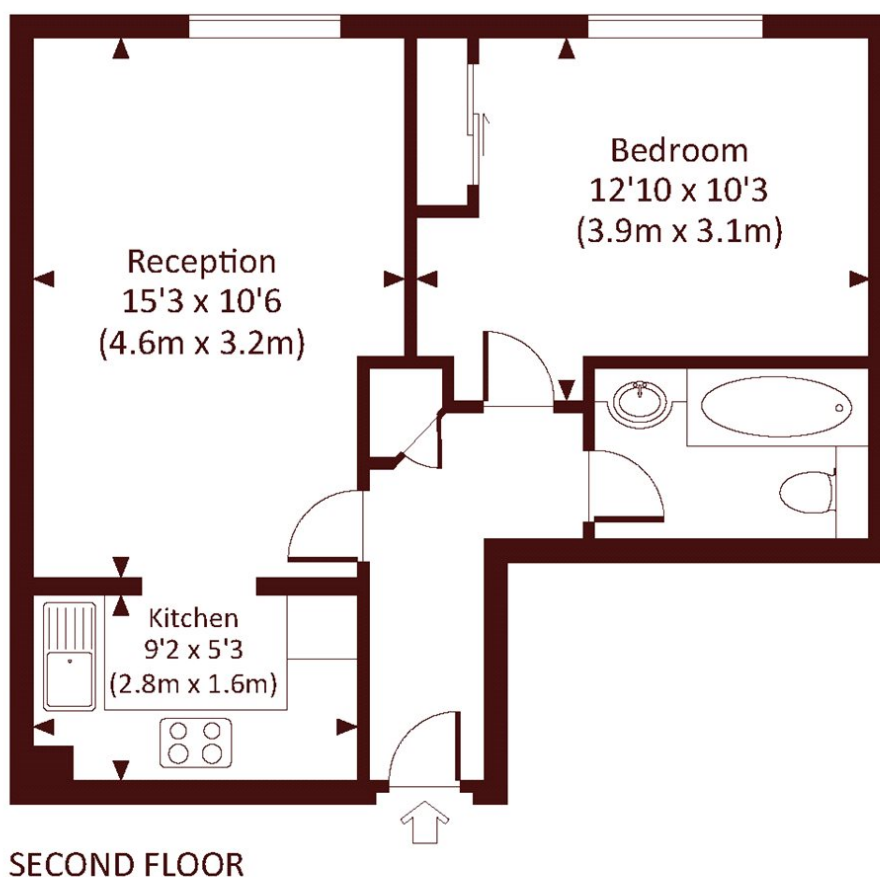
The building is located just off Crawford Street in the middle of Marylebone. It is well located in central Marylebone, convenient for Baker Street tube and has some very good local shops, restaurants and delicatessens as well as the myriad of shops in the wider surrounds.



# STEP INSIDE DURWESTON STREET

DURWESTON STREET, W1H

Approx. gross internal area  
422 Sq.Ft. / 39.2 Sq.M.



All measurements have been made in accordance with RICS Code of Measuring Practice which are approximate only and only for illustrative purposes. For the avoidance of doubt, Dowling Jones Design shall not be liable for any reliance on these measurements. © 2016 www.dowlingjones.com 020 7610 9933

Marylebone & Mayfair  
020 7935 1775

Energy Rating: C We aim to make our particulars both accurate and reliable. However, they are not guaranteed; nor do they form part of an offer or contract. If you require clarification on any points then please contact us, especially if you're traveling some distance to view. Please note that appliances and heating systems have not been tested and therefore no warranties can be given as to their good working order

MARSH &  
PARSONS