



DYNE ROAD, NW6

£2,500 per month

Two Bedroom
Two Bathroom
First Floor
Modern
Close To Transport
Near High Street

@marshandparsons
marshandparsons.co.uk

MARSH &
PARSONS



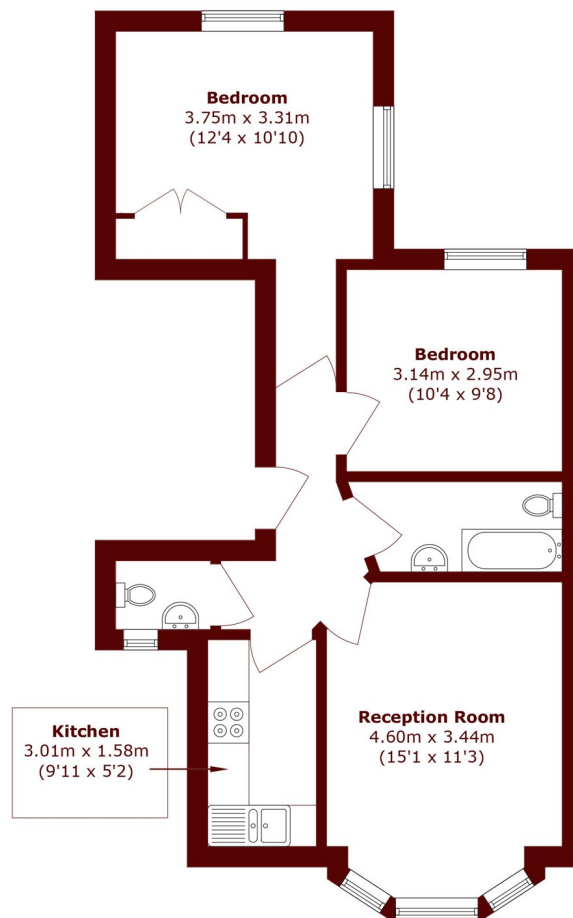
ABOUT THE PROPERTY

A spacious first floor flat two double bedroom flat is located on a tree-lined residential street. A large living dining space, two modern bathrooms and separate kitchen which has been newly refurbished.

Dyne Road is ideally located within easy reach of the cafes, restaurants and amenities of Kilburn High Road and Salisbury Road. Local transport links include Brondesbury and Brondesbury Park (London Overground) and Kilburn (Jubilee Line).



STEP INSIDE DYNE ROAD



Total area (approx.): 54.7 sq. m (588.7 sq. ft)

Queen's Park
020 7871 5050

Energy Rating: D We aim to make our particulars both accurate and reliable. However, they are not guaranteed; nor do they form part of an offer or contract. If you require clarification on any points then please contact us, especially if you're traveling some distance to view. Please note that appliances and heating systems have not been tested and therefore no warranties can be given as to their good working order

**MARSH &
PARSONS**