

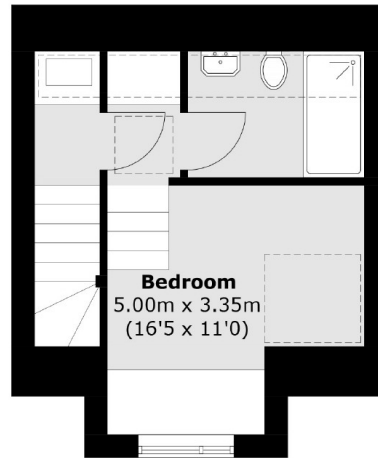


## Kingsmead Road, SW2

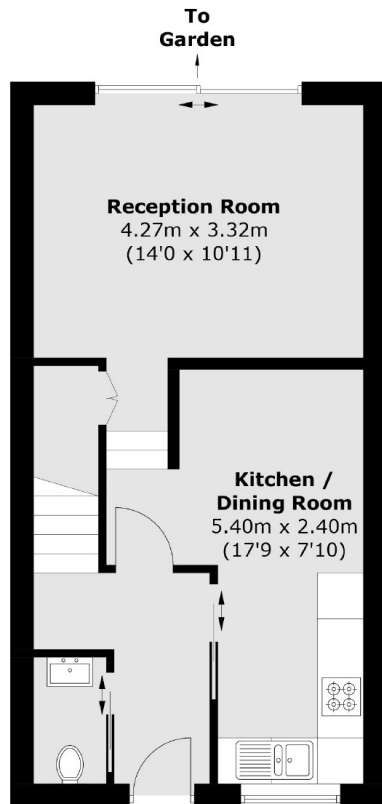
£775,000

3 2 2 E

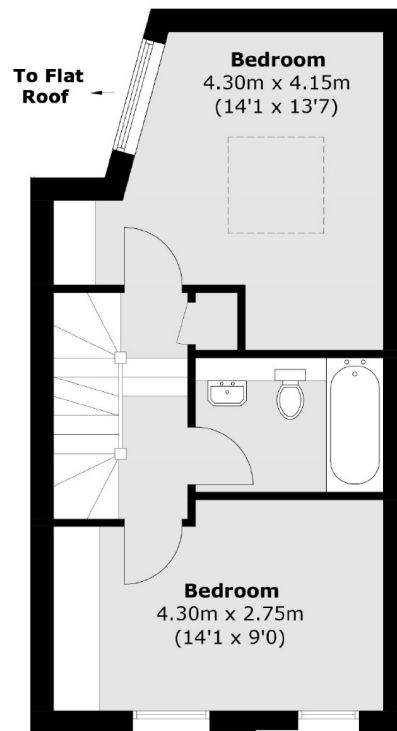
- Three Bedrooms
- Two Bathrooms
- Freehold House
- Incredibly High Specification
- Bespoke Designed Homes
- Quiet & Popular Location



**Second Floor**



**Ground Floor**



**First Floor**

Total area (approx.): 90.0 sq. m (968.6 sq. ft)

**Marsh & Parsons Marsh & Parsons**

113-117 Streatham Hill,  
London, SW2 4UG  
020 8671 0171

We aim to make our particulars both accurate and reliable. However, they are not guaranteed; nor do they form part of an offer or contract. If you require clarification on any points then please contact us, especially if you're traveling some distance to view. Please note that appliances and heating systems have not been tested and therefore no warranties can be given as to their good working order.