

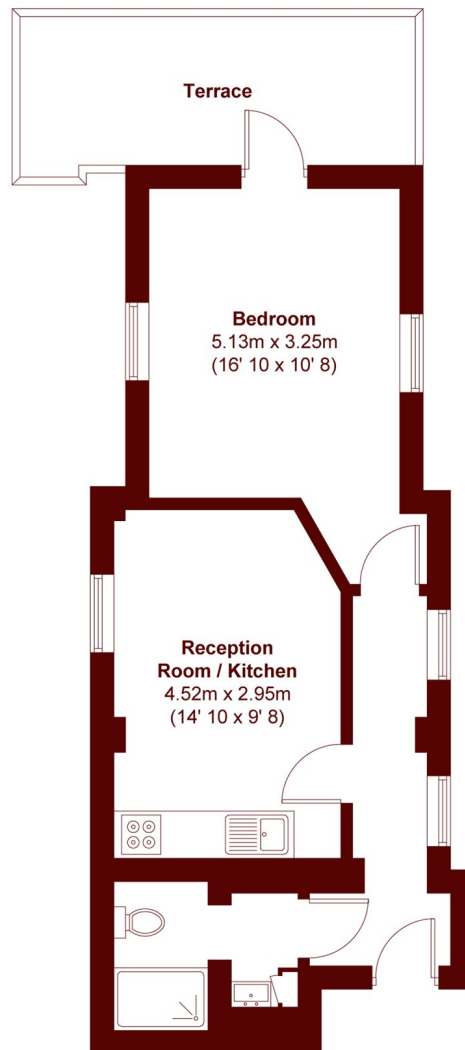


## LATCHMERE ROAD, SW11

£2,100 per month

A fantastic one-bedroom apartment featuring a stylish kitchen with sleek gloss units, opening onto a bright reception room with engineered wood flooring and dual-aspect windows that flood the space with natural light.

# STEP INSIDE LATCHMERE ROAD



APPROX. GROSS INTERNAL FLOOR AREA 432 SQFT / 40.1 SQM  
APPROX. GROSS EXTERNAL TERRACE AREA 108 SQFT / 10 SQM

**Battersea**  
020 7228 9292

Energy Rating: D We aim to make our particulars both accurate and reliable. However, they are not guaranteed; nor do they form part of an offer or contract. If you require clarification on any points then please contact us, especially if you're traveling some distance to view. Please note that appliances and heating systems have not been tested and therefore no warranties can be given as to their good working order

**MARSH &  
PARSONS**