



HOLLAND PARK AVENUE, W11

£650,000

Two Double Bedrooms
Open-Plan
Wooden Flooring
Prime Location
Natural Light
Close To Park

@marshandparsons
marshandparsons.co.uk

MARSH &
PARSONS



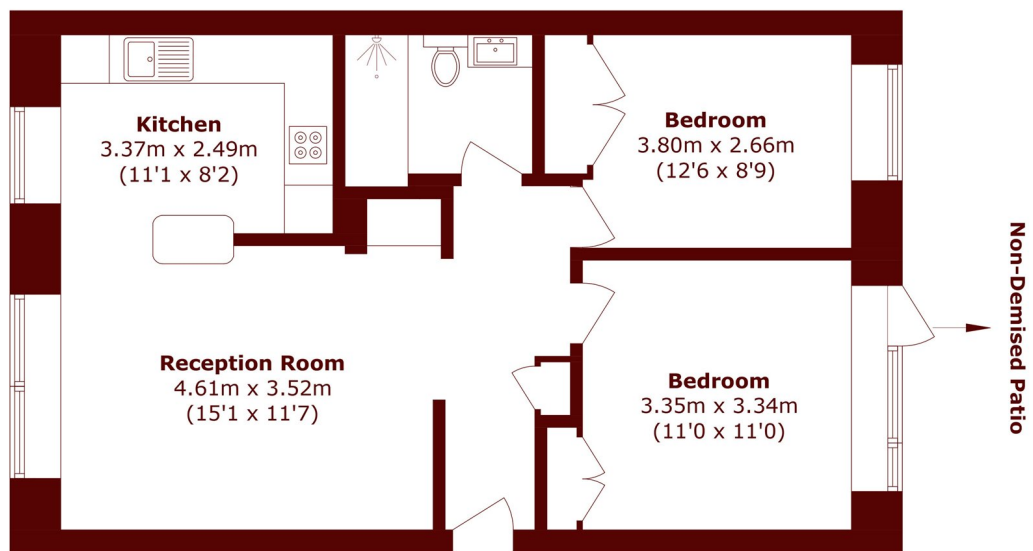
ABOUT THE PROPERTY

A well proportioned two bedroom apartment in a wonderful location between Holland Park and Notting Hill. The property features a bright open-plan living area to the front, two double bedrooms to the rear and a access to a non-demised patio area.

Holland Park Avenue is perfectly positioned for the shops, bars and eateries of Holland Park, Notting Hill Gate and Westfield leisure complex. The nearest Underground station is Holland Park, on the Central line.



STEP INSIDE HOLLAND PARK AVENUE



Lower Ground Floor

Total area (approx.): 60.0 sq. m (645.8 sq. ft)

Holland Park
020 7605 6890

Energy Rating: We aim to make our particulars both accurate and reliable. However, they are not guaranteed; nor do they form part of an offer or contract. If you require clarification on any points then please contact us, especially if you're traveling some distance to view. Please note that appliances and heating systems have not been tested and therefore no warranties can be given as to their good working order

**MARSH &
PARSONS**