



## CLYDE STREET, SE8

£385,000

Modern duplex apartment  
One double bedroom  
Open plan living  
Private roof terrace  
Close to Deptford station  
Energy rating: c

@marshandparsons  
marshandparsons.co.uk

MARSH &  
PARSONS



# ABOUT THE PROPERTY

A modern duplex apartment offering a rare private roof terrace with stunning 360-degree views across London. The expansive roof terrace is completely private and enjoys far-reaching views towards Canary Wharf and The Shard. The interior accommodation comprises a double bedroom featuring tall, walk-in fitted wardrobes alongside a contemporary bathroom. A particularly spacious lounge/diner and an open plan kitchen.

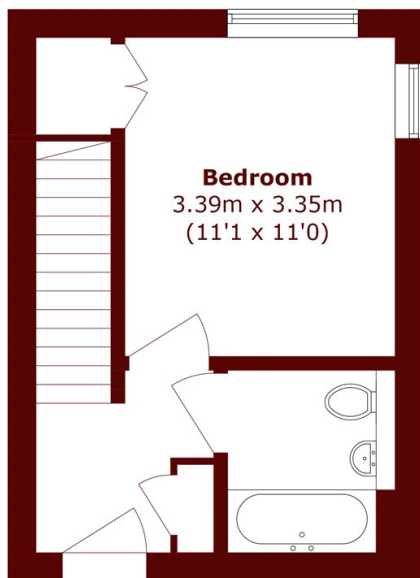
Deptford mainline station, the vibrant high street, and the specialist shops and eateries located within the nearby railway arches are all just a short walk away.



# STEP INSIDE CLYDE STREET



**Third Floor**



**First Floor**



**Second Floor**

Total area (approx.): 50.8 sq. m (546.8 sq. ft)

Terrace area (approx.): 9.7 sq. m (104.4 sq. ft)

**Greenwich**  
020 8312 8312

Energy Rating: C We aim to make our particulars both accurate and reliable. However, they are not guaranteed; nor do they form part of an offer or contract. If you require clarification on any points then please contact us, especially if you're traveling some distance to view. Please note that appliances and heating systems have not been tested and therefore no warranties can be given as to their good working order

**MARSH &  
PARSONS**