



## CHAMBERS LANE, NW10

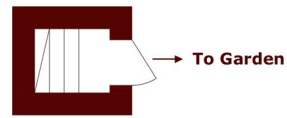
£525,000

This well-proportioned, first floor maisonette comprises a spacious reception room with direct access to a large, private garden with outbuilding, a separate kitchen, two double bedrooms and a three piece

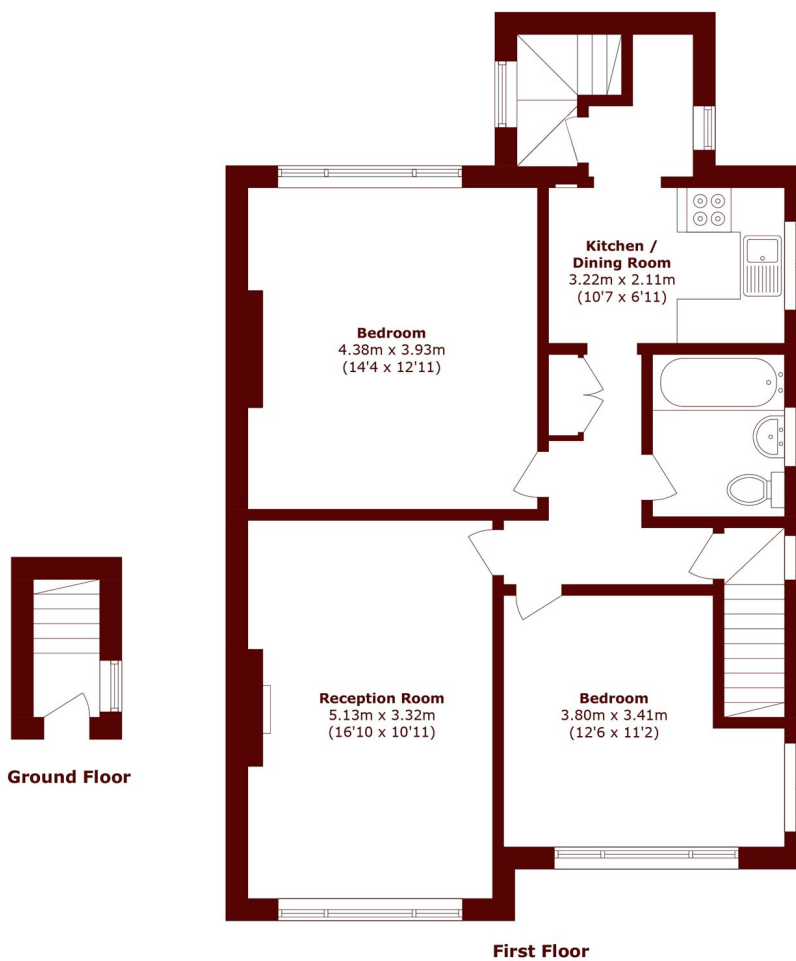
Two bedrooms  
One bathroom  
Private garden

First floor maisonette  
Separate reception  
Modern finish

# STEP INSIDE CHAMBERS LANE



Ground Floor



Total area (approx.): 74.7 sq. m (804.1 sq. ft)

Willesden Green  
020 8451 0420

Energy Rating: D We aim to make our particulars both accurate and reliable. However, they are not guaranteed; nor do they form part of an offer or contract. If you require clarification on any points then please contact us, especially if you're traveling some distance to view. Please note that appliances and heating systems have not been tested and therefore no warranties can be given as to their good working order

MARSH &  
PARSONS