



CHARLTON ROAD, SE7

£350,000

Flat
Two bedrooms
Second floor
Residents parking
Private balcony
Energy rating: b

@marshandparsons
marshandparsons.co.uk

MARSH &
PARSONS



ABOUT THE PROPERTY

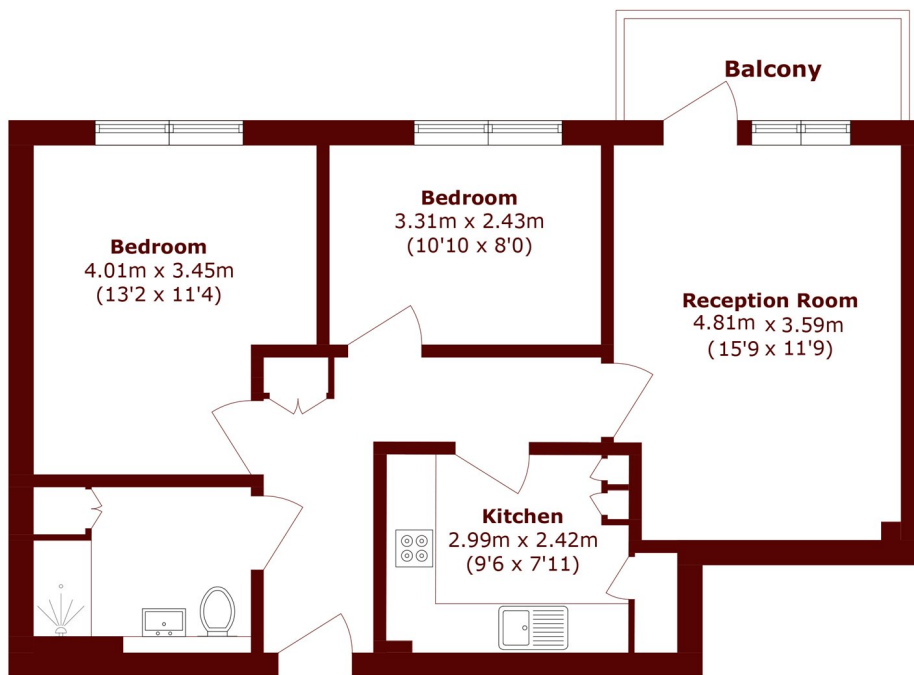
Guide Price £350,000-£375,000.

A modern second floor apartment located in a desirable development central. The property includes a large living-dining space with separate fitted kitchen with appliances, two spacious double bedrooms, white bathroom with shower, and an private balcony to the rear. There is also storage, gas central heating, and residents parking space.

Located on Charlton Road and is ideal for access to local shops in Charlton Village and Blackheath Standard, is a short stroll to Charlton station and is right on bus routes to North Greenwich tube and The Elizabeth Line tube station.



STEP INSIDE CHARLTON ROAD



Total area (approx.): 61.5 sq. m (661.9 sq. ft)

Balcony area (approx.): 4.1 sq. m (44.1 sq. ft)

Charlton
020 8293 0454

Energy Rating: B We aim to make our particulars both accurate and reliable. However, they are not guaranteed; nor do they form part of an offer or contract. If you require clarification on any points then please contact us, especially if you're traveling some distance to view. Please note that appliances and heating systems have not been tested and therefore no warranties can be given as to their good working order

**MARSH &
PARSONS**