



FULHAM PALACE ROAD, SW6

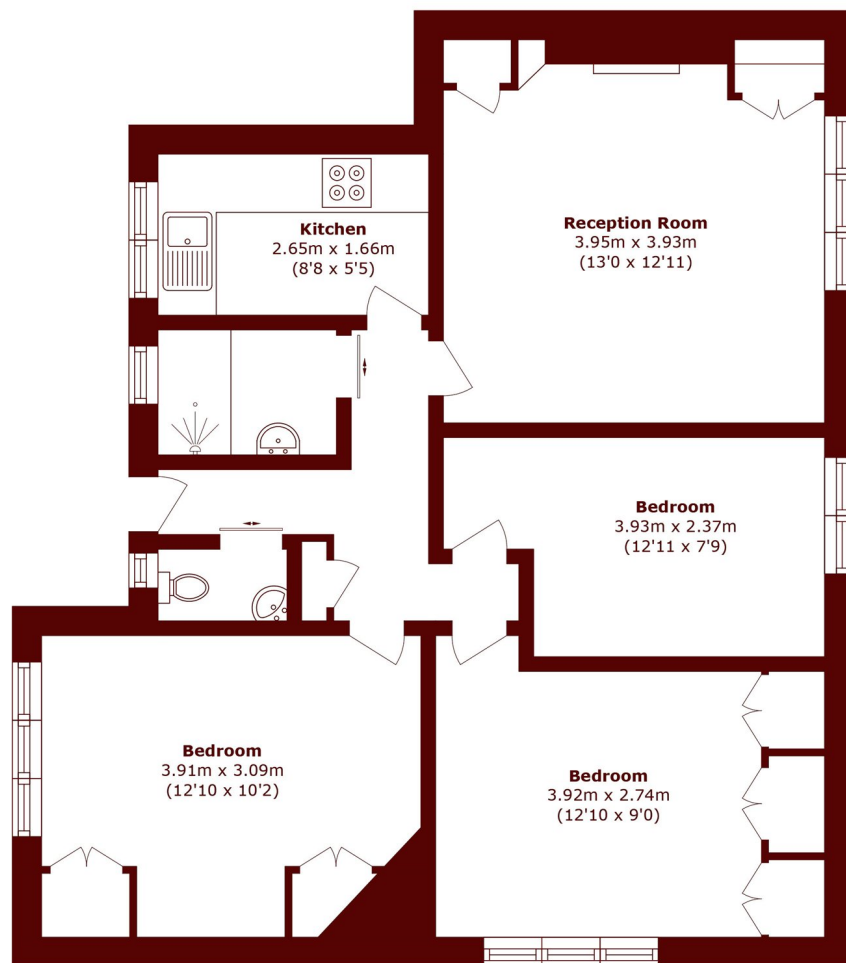
£2,600 per week

Available to let, this three bedroom purpose-built apartment is located on the first floor of Robert Owen House and benefits from its own private entrance and a terrace.

Three bedrooms
First floor

Balcony
Excellent transport links

STEP INSIDE FULHAM PALACE ROAD



Total area (approx.): 63.8 sq. m (686.7 sq. ft)

Bishops Park
020 7368 2480

Energy Rating: We aim to make our particulars both accurate and reliable. However, they are not guaranteed; nor do they form part of an offer or contract. If you require clarification on any points then please contact us, especially if you're traveling some distance to view. Please note that appliances and heating systems have not been tested and therefore no warranties can be given as to their good working order

**MARSH &
PARSONS**