



EDGE HILL, SW19

£2,000 per month

Popular development
Communal gardens
Two bedrooms
Modern fitted kitchen
Parking
Energy rating: e

@marshandparsons
marshandparsons.co.uk

MARSH &
PARSONS



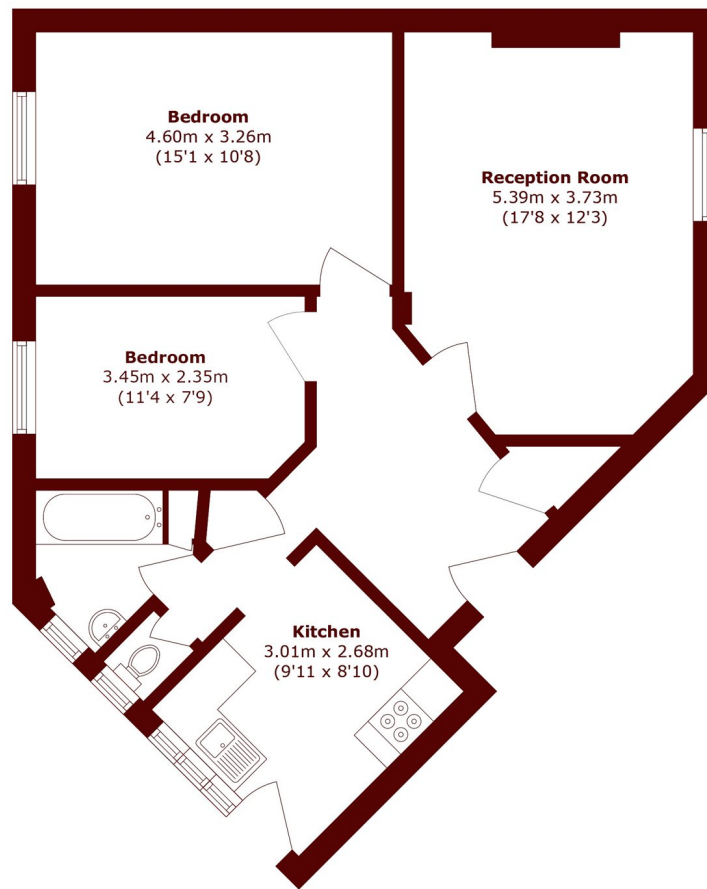
ABOUT THE PROPERTY

A well presented two double bedroom flat to rent in a popular well maintained development in Wimbledon. Further benefitting from parking, communal gardens and offered unfurnished.

This apartment is conveniently located for Wimbledon Common, Village and Town Centre.



STEP INSIDE EDGE HILL



Total area (approx.): 67.8 sq. m (729.9 sq. ft)

Wimbledon
020 8879 6661

Energy Rating: E We aim to make our particulars both accurate and reliable. However, they are not guaranteed; nor do they form part of an offer or contract. If you require clarification on any points then please contact us, especially if you're traveling some distance to view. Please note that appliances and heating systems have not been tested and therefore no warranties can be given as to their good working order

MARSH &
PARSONS