



## OCCUPATION LANE, SE18

£675,000

Semi-detached bungalow Private road  
Two bedrooms  
Open plan living area  
Gated detached garage with inspection  
pit  
Energy rating: d



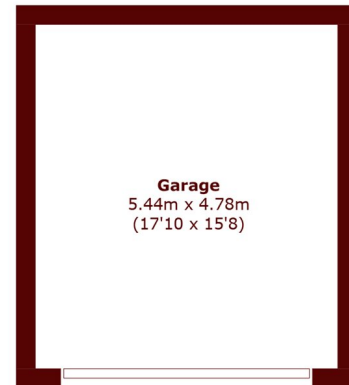
# ABOUT THE PROPERTY

Beautifully renovated two bedroom stone bungalow (1869) on a sought-after private road, blending period charm with modern style. Features a bright open plan kitchen, living and dining space with a handcrafted reclaimed kitchen, quartz worktops, breakfast bar, and courtyard access. Includes two spacious bedrooms, a luxury bathroom, home office, insulated loft with conversion potential (STPP), a large detached garage with inspection pit, and a secluded mature walled garden.

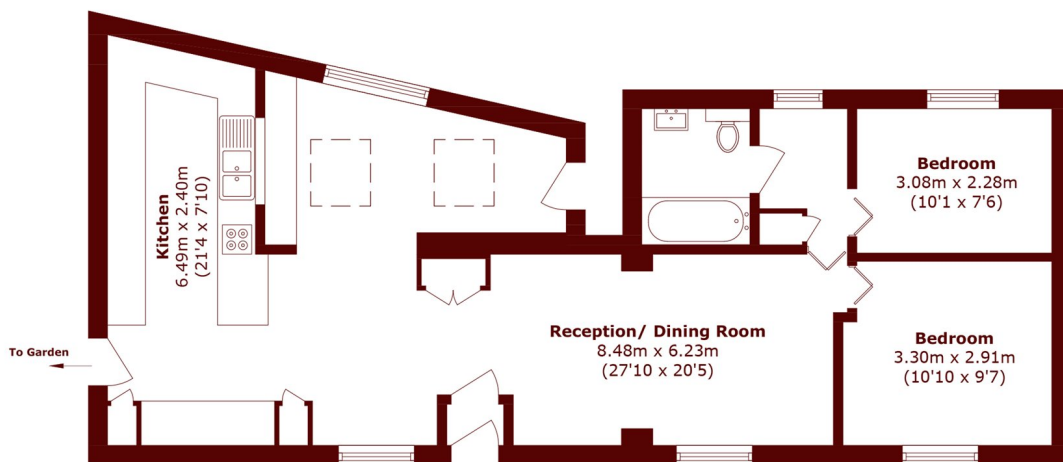
Located near Woolwich Common and close to Woolwich Arsenal Station (Elizabeth Line, DLR and mainline services), with Woolwich Town Centre's shops, cafés and amenities nearby.



# STEP INSIDE OCCUPATION LANE



**Ground Floor**



**Ground Floor**

Total area (approx.): 79.2 sq. m (852.5 sq. ft)  
Garage area (approx.): 26.0 sq. m (279.9 sq. ft)

**Charlton**  
020 8629 8164

Energy Rating: We aim to make our particulars both accurate and reliable. However, they are not guaranteed; nor do they form part of an offer or contract. If you require clarification on any points then please contact us, especially if you're traveling some distance to view. Please note that appliances and heating systems have not been tested and therefore no warranties can be given as to their good working order

**MARSH &  
PARSONS**