



## ELGIN CRESCENT, W11

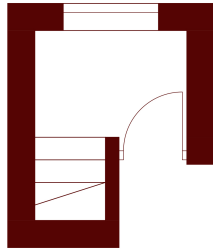
£577 per week (£2,500 per month)

A stunning newly refurbished one-bedroom apartment positioned on one of Notting Hill's most sought-after streets.

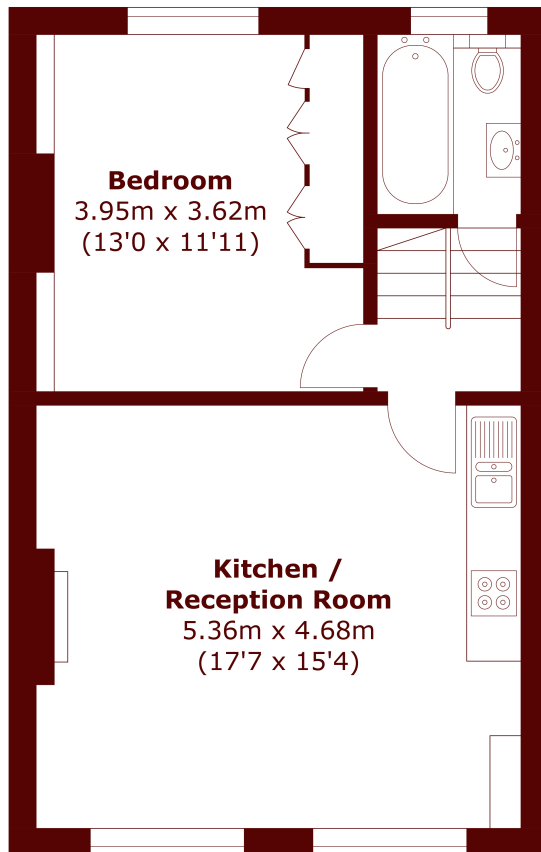
One bedroom  
Natural light  
Excellent location

Wooden flooring  
Contemporary kitchen  
Beautiful original fireplace

# STEP INSIDE ELGIN CRESCENT



**Ground Floor**



**First Floor**

Total area (approx.): 49.9 sq. m (537.1 sq. ft)

**Notting Hill**  
020 7313 6910

Energy Rating: D We aim to make our particulars both accurate and reliable. However, they are not guaranteed; nor do they form part of an offer or contract. If you require clarification on any points then please contact us, especially if you're traveling some distance to view. Please note that appliances and heating systems have not been tested and therefore no warranties can be given as to their good working order

**MARSH &  
PARSONS**