



## OAKLEY STREET, SW3

£1,750,000

Three-bedroom maisonette  
Accessed via first floor  
Two bathrooms  
Large reception room  
Private roof terrace  
Share of freehold in SW3

@marshandparsons  
marshandparsons.co.uk

MARSH &  
PARSONS



# ABOUT THE PROPERTY

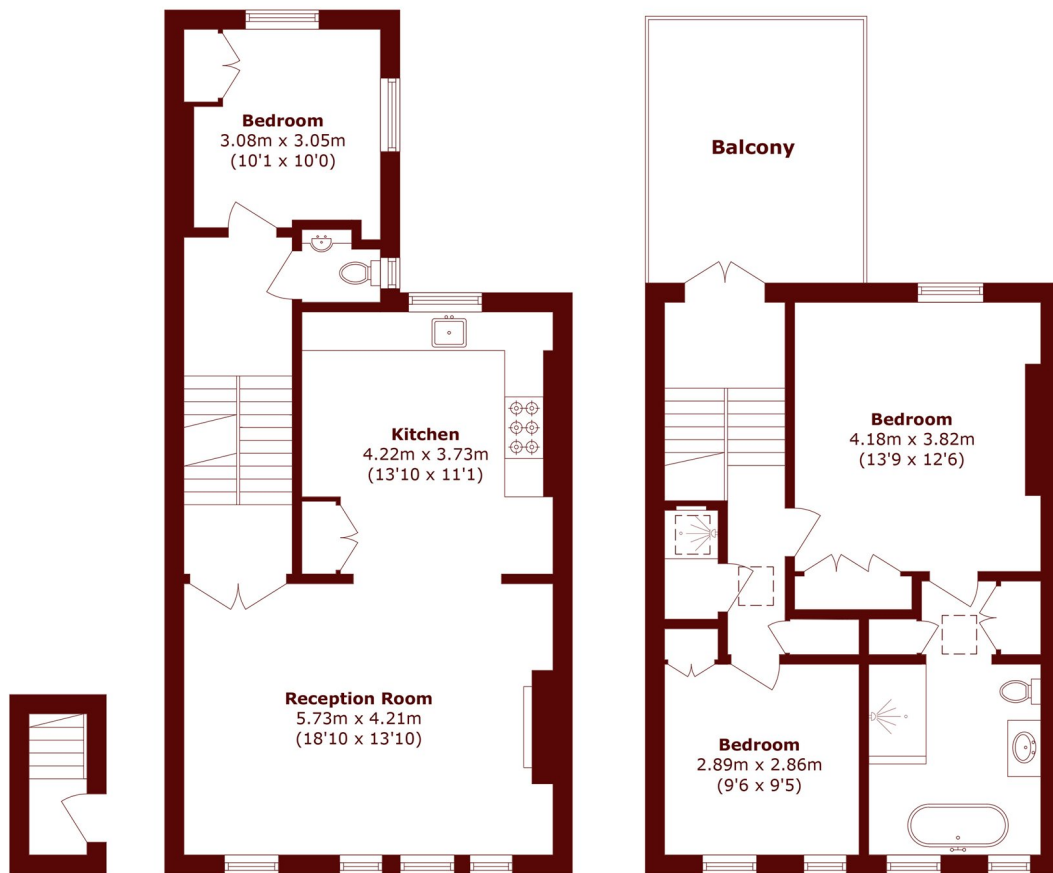
Positioned on one of Chelsea's most charming streets, this beautiful three-bedroom duplex perfectly blends classic Victorian character with a bright, thoughtful layout across the upper floors, offering a fantastic sense of volume, architectural interest, and open space throughout.

Bathed in natural light from large period windows, the expansive, dual-aspect reception room on the second floor connects seamlessly to a large, open-plan kitchen, creating a highly social layout that is perfect for hosting vibrant dinner parties or relaxing in total comfort.

On the third floor, the bedroom accommodation is brilliantly separated for ultimate privacy. The spacious



# STEP INSIDE OAKLEY STREET



**First Floor**

**Second Floor**

**Third Floor**

Total area (approx.): 113.7 sq. m (1223.8 sq. ft)

Balcony area (approx.): 14.2 sq. m (152.8 sq. ft)

**Chelsea**  
020 7591 5580

Energy Rating: We aim to make our particulars both accurate and reliable. However, they are not guaranteed; nor do they form part of an offer or contract. If you require clarification on any points then please contact us, especially if you're traveling some distance to view. Please note that appliances and heating systems have not been tested and therefore no warranties can be given as to their good working order

**MARSH &  
PARSONS**