



STEVENAGE ROAD, SW6

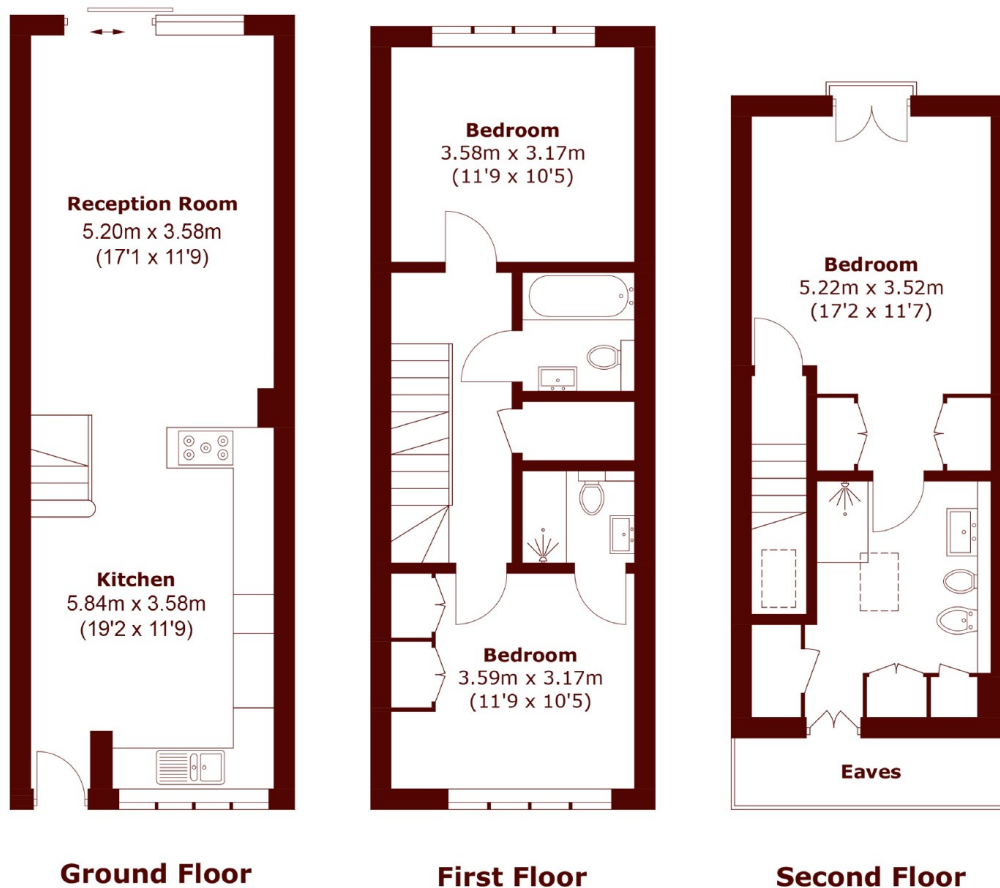
£3,900 per week

Located on the sought after Stevenage Road, this recently refurbished townhouse offers an exceptional blend of modern style and practical living. Spanning three floors, the property boasts three generous double

Three bedrooms
Three bathrooms
Recently renovated

Excellent location
Garden
Private parking

STEP INSIDE STEVENAGE ROAD



Total area (approx.): 110.5 sq. m (1,189.2 sq. ft)
(Excluding Eaves)

Bishops Park
020 7368 2480

Energy Rating: We aim to make our particulars both accurate and reliable. However, they are not guaranteed; nor do they form part of an offer or contract. If you require clarification on any points then please contact us, especially if you're traveling some distance to view. Please note that appliances and heating systems have not been tested and therefore no warranties can be given as to their good working order

**MARSH &
PARSONS**