



KENSINGTON GARDENS SQUARE,

£875,000

Two Bedrooms
Two Bathrooms
No Onward Chain
Recently Refurbished
Off-Street Parking
Concierge & Lift

@marshandparsons
marshandparsons.co.uk

MARSH &
PARSONS



ABOUT THE PROPERTY

A two bedroom, two bathroom lateral apartment on the second floor (with lift), featuring a recently refurbished kitchen, reception room and bathrooms, all finished to a high standard. Further benefits include large sash windows, off-street parking, gym, swimming pool and golf simulator.

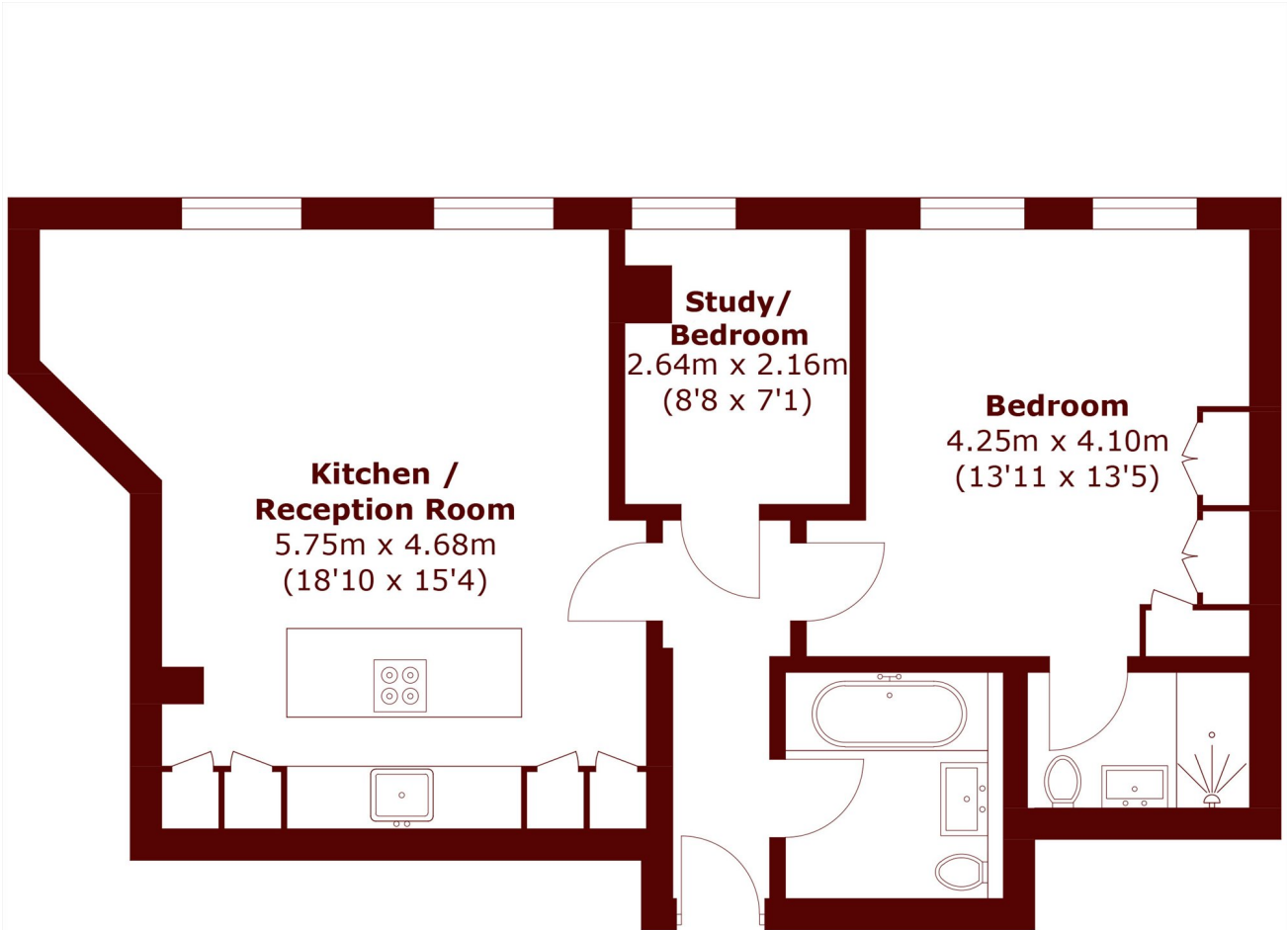
Ideally positioned just off Westbourne Grove, moments from Notting Hill's shops, cafés and restaurants.

Bayswater, Queensway and Paddington stations are all within easy reach, as is Hyde Park. Residents benefit from a 24-hour concierge, swimming pool, gym and golf simulator, alongside the exciting ongoing transformation of the Whiteley Development.



STEP INSIDE

KENSINGTON GARDENS SQUARE



Total area (approx.): 63.9 sq. m (687.8 sq. ft)

Notting Hill
020 7313 2890

Energy Rating: C We aim to make our particulars both accurate and reliable. However, they are not guaranteed; nor do they form part of an offer or contract. If you require clarification on any points then please contact us, especially if you're traveling some distance to view. Please note that appliances and heating systems have not been tested and therefore no warranties can be given as to their good working order

MARSH &
PARSONS