



## KEW BRIDGE ROAD, TW8

£475,000

Two bedrooms  
Two bathrooms  
River views  
Fantastic condition  
Great transport links  
Energy rating: b

@marshandparsons  
marshandparsons.co.uk

MARSH &  
PARSONS

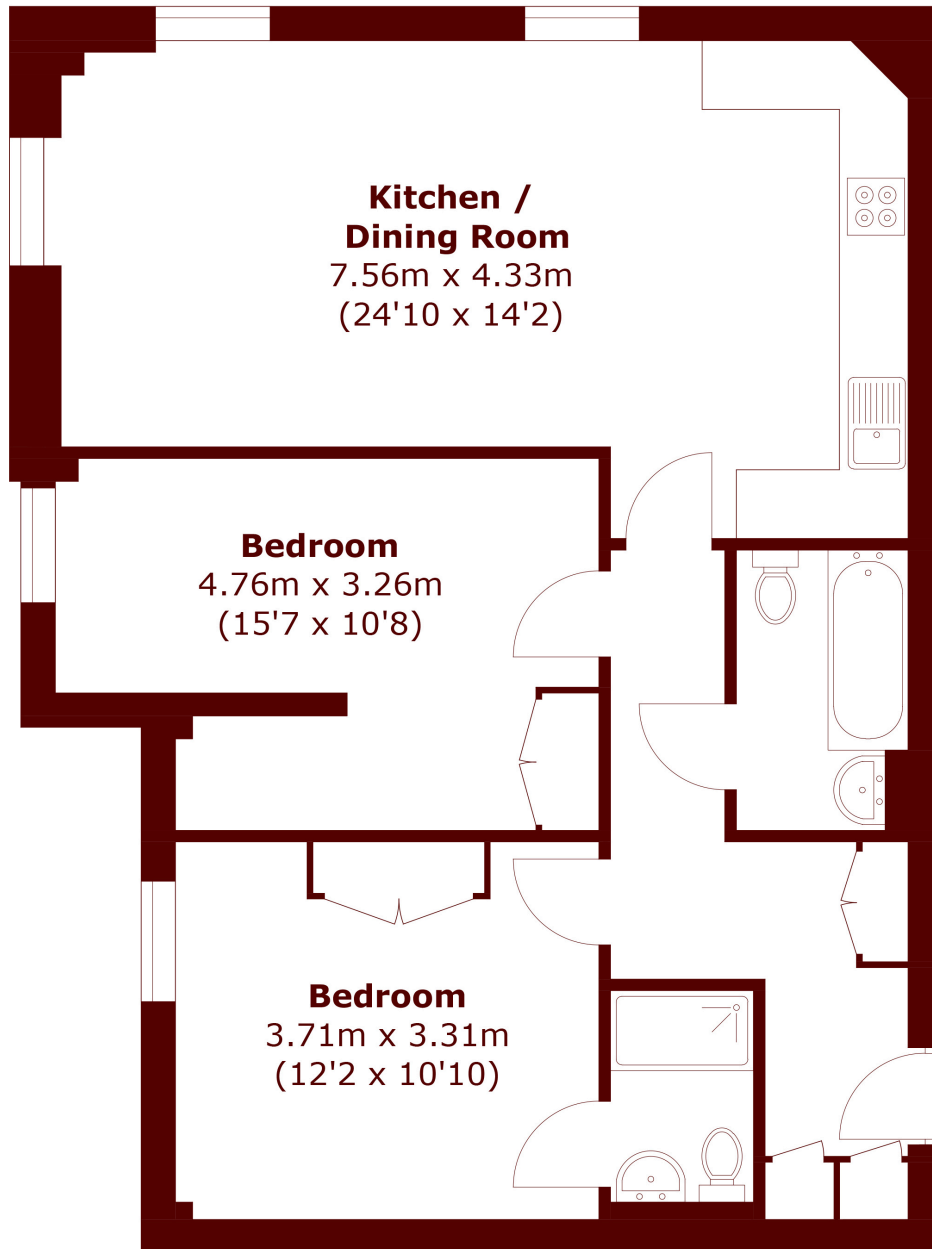


# ABOUT THE PROPERTY

Kew Bridge Road offers everything you need on your doorstep. With some of London's best restaurants nearby, there is also an abundance of bars, cafés and independent boutiques to choose from. The classic Georgian architectural features of the exterior are reflected in subtle ways whilst internally there is a modern twist. The open plan living kitchen has views over the River Thames along with the principle bedroom having access to the en suite. There is a further double bedroom and family bathroom.



# STEP INSIDE KEW BRIDGE ROAD



Total area (approx.): 70.7 sq. m (761.1 sq. ft)

Chiswick  
020 8994 2556

Energy Rating: B We aim to make our particulars both accurate and reliable. However, they are not guaranteed; nor do they form part of an offer or contract. If you require clarification on any points then please contact us, especially if you're traveling some distance to view. Please note that appliances and heating systems have not been tested and therefore no warranties can be given as to their good working order

MARSH &  
PARSONS