



ELGIN CRESCENT, W11

£395,000

Views over gardens

Share of freehold

Mezzanine

Chain Free

Studio

EPC- D

@marshandparsons
marshandparsons.co.uk

MARSH &
PARSONS



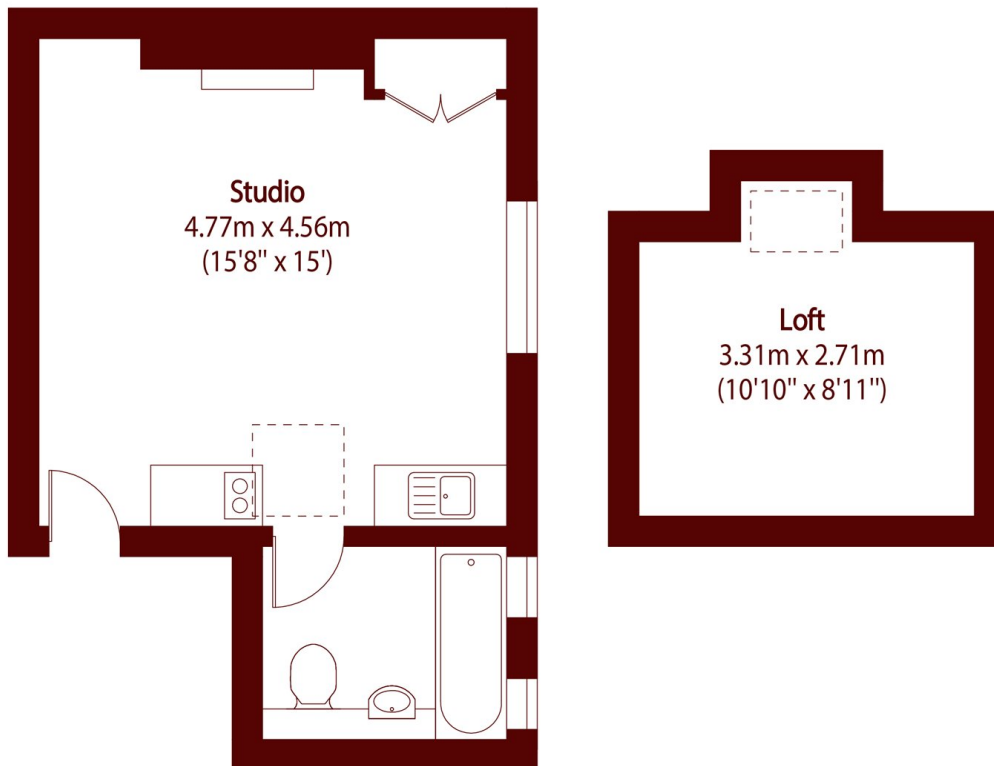
ABOUT THE PROPERTY

Situated on the second floor of an attractive period building on the prestigious Elgin Crescent, this charming studio apartment features a mezzanine sleeping area and enjoys delightful views across the surrounding gardens.

The property is ideally positioned between Westbourne Grove and Chepstow Villas with a fabulous selection of restaurants on Kensington Park Road to choose from, not to mention the wonderful range of fashionable boutique shops and cafes available on Westbourne Grove and Ledbury Road. There are excellent transport links available from Notting Hill Gate with easy access to the Central, Circle and District lines.



STEP INSIDE ELGIN CRESCENT



Total area (approx): 27.12 sq m (292 sq. ft)
(Excluding Loft)

Loft total area (approx): 8.62 sq m (93 sq. ft)

Notting Hill
020 7313 2890

Energy Rating: D We aim to make our particulars both accurate and reliable. However, they are not guaranteed; nor do they form part of an offer or contract. If you require clarification on any points then please contact us, especially if you're traveling some distance to view. Please note that appliances and heating systems have not been tested and therefore no warranties can be given as to their good working order

**MARSH &
PARSONS**