



WESTFIELDS AVENUE, SW13

£985,000 per week (per month)

Victorian freehold cottage
Three bedrooms
Spacious reception room
Modern kitchen
Private garden
Little Chelsea

@marshandparsons
marshandparsons.co.uk

MARSH &
PARSONS

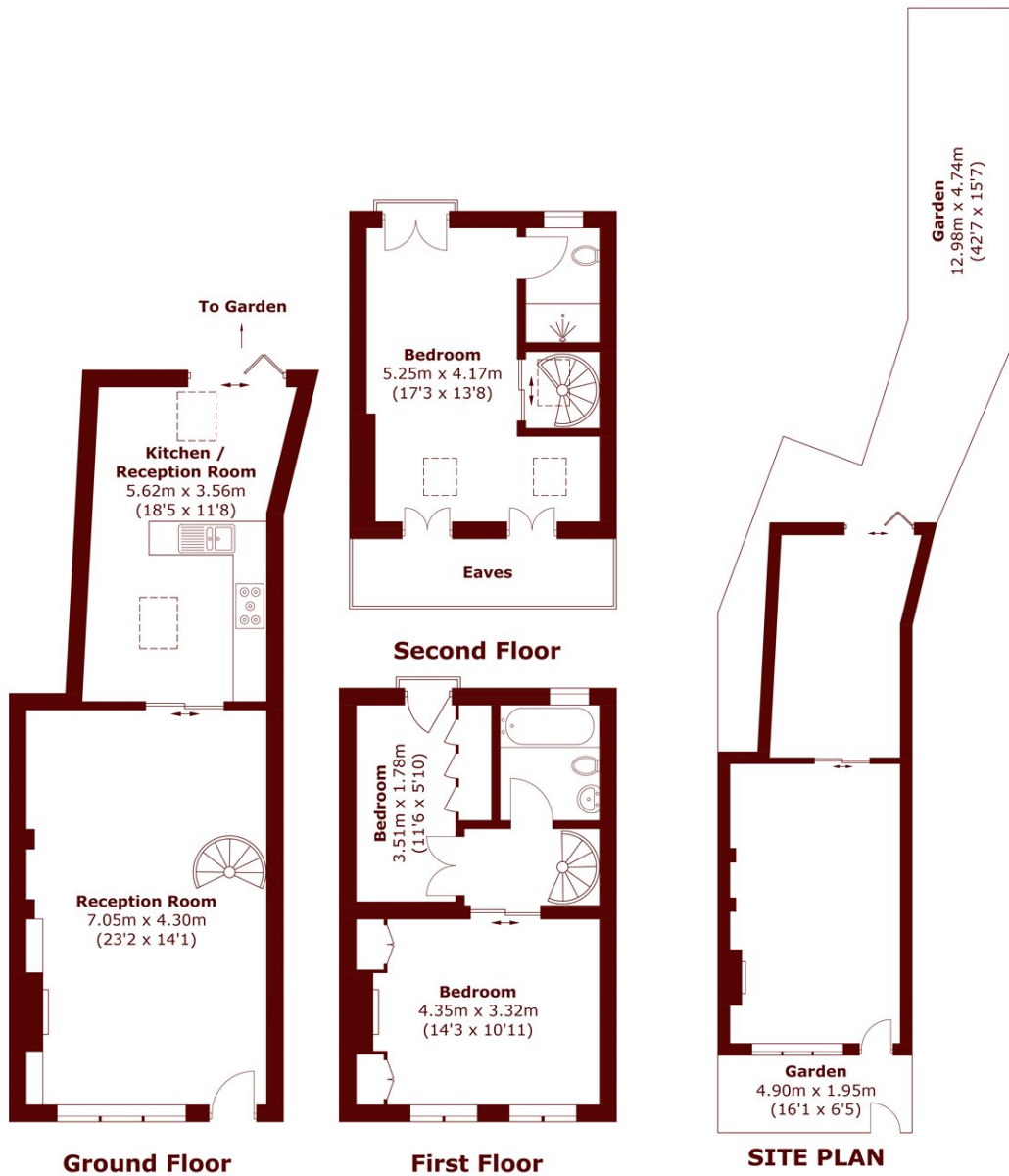


ABOUT THE PROPERTY

Marsh and Parsons are proud to present this Victorian terraced family house which has been extended and modernised by the existing owners. The property comprises on front garden, spacious large double reception room with feature fireplace, through floor to ceiling sliding doors the property flows into an open plan modern fitted kitchen with a further reception space beyond the kitchen. Fashionable bi-fold doors opening onto a private garden. Upstairs, there are three double bedrooms with the principal bedroom spanning the full width of the front of the house and benefiting from fitted cupboards. There are also two bathrooms (one en suite showeroom). The top floor bedroom also has plenty of eaves storage and a juliet balcony making it feel light,



STEP INSIDE WESTFIELDS AVENUE



Total area (approx.): 103.0 sq. m (1,108.6 sq. ft)
(Excluding Eaves)

Barnes & East Sheen
020 8563 8222

Energy Rating: D We aim to make our particulars both accurate and reliable. However, they are not guaranteed; nor do they form part of an offer or contract. If you require clarification on any points then please contact us, especially if you're traveling some distance to view. Please note that appliances and heating systems have not been tested and therefore no warranties can be given as to their good working order

MARSH &
PARSONS