



DENMARK ROAD, SW19

£3,250 per month

Two bedrooms
Cottage
Private garden
Built-in wardrobes
Wimbledon village
Energy rating: d

@marshandparsons
marshandparsons.co.uk

MARSH &
PARSONS



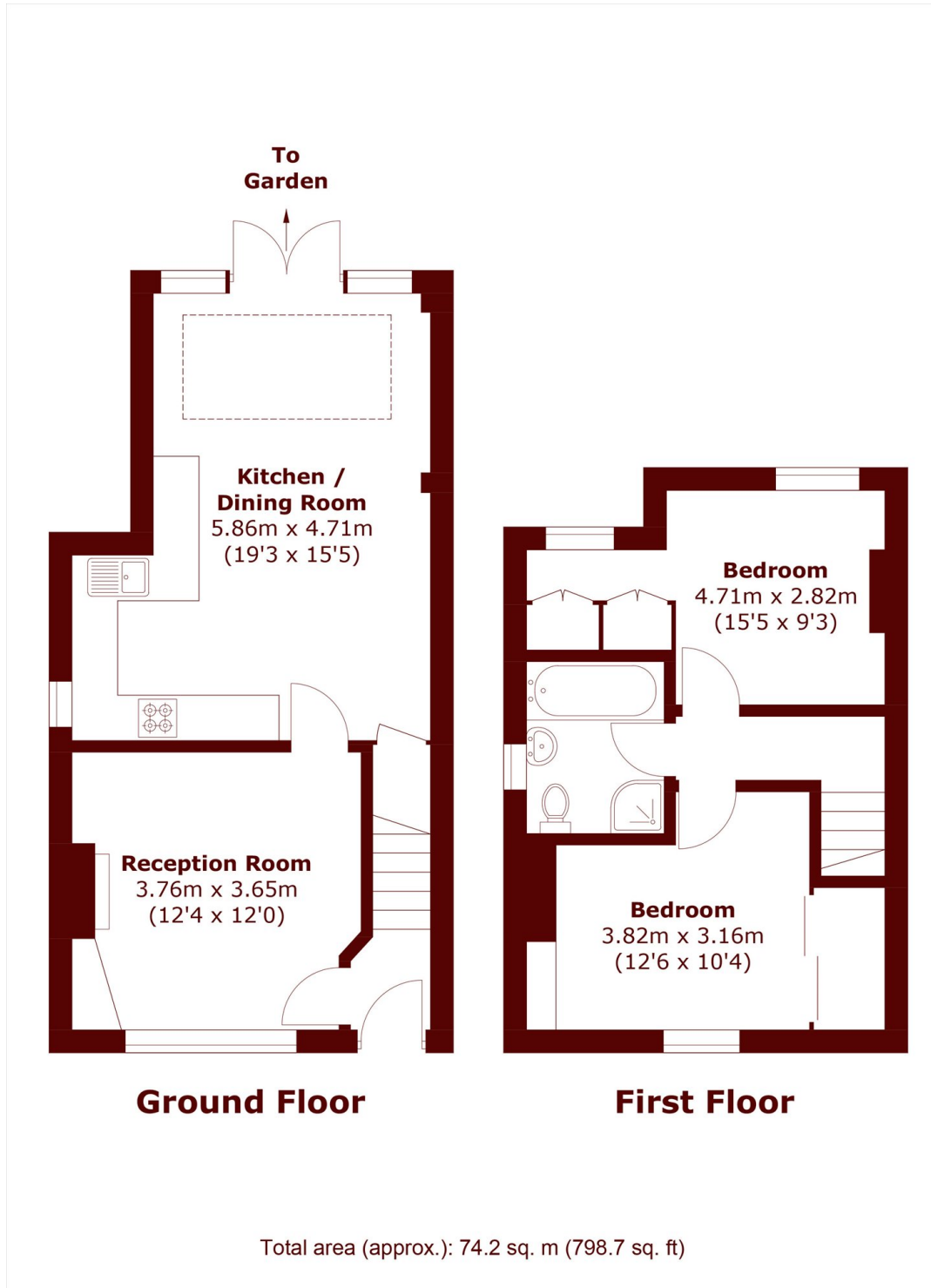
ABOUT THE PROPERTY

A two bedroom cottage situated in Wimbledon Village offering a reception room; fitted kitchen/breakfast room with doors leading to a private garden; double bedroom with built-in wardrobes; further bedroom and a bathroom with a bath and shower.

Located in Wimbledon Village.



STEP INSIDE DENMARK ROAD



Wimbledon
020 8879 6661

Energy Rating: D We aim to make our particulars both accurate and reliable. However, they are not guaranteed; nor do they form part of an offer or contract. If you require clarification on any points then please contact us, especially if you're traveling some distance to view. Please note that appliances and heating systems have not been tested and therefore no warranties can be given as to their good working order

MARSH &
PARSONS