



GLOUCESTER TERRACE, W2

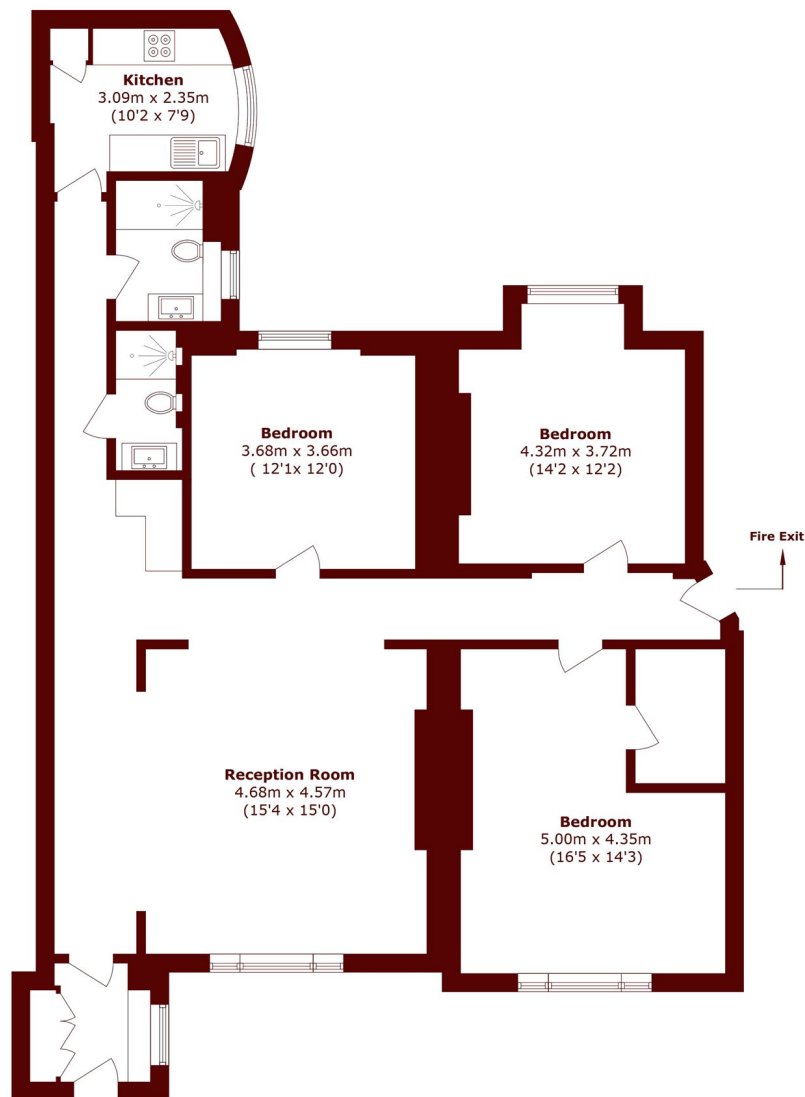
£7,000 per month

A newly refurbished three-bedroom apartment set within an impressive period building, beautifully finished to an exceptional standard throughout.

Newly refurbished
Three double bedrooms
Two bathrooms

High ceilings
Wooden floors
EPC - D

STEP INSIDE GLOUCESTER TERRACE



Raised Ground Floor

Total area (approx.): 128.3 sq. m (1381.0 sq. ft)

Notting Hill
020 7313 6910

Energy Rating: D We aim to make our particulars both accurate and reliable. However, they are not guaranteed; nor do they form part of an offer or contract. If you require clarification on any points then please contact us, especially if you're traveling some distance to view. Please note that appliances and heating systems have not been tested and therefore no warranties can be given as to their good working order

MARSH &
PARSONS