



ROCHELLE CLOSE, SW11

£425,000

Well proportioned
Open plan layout
Double bedroom
Parking
Communal terrace
No chain

@marshandparsons
marshandparsons.co.uk

MARSH &
PARSONS



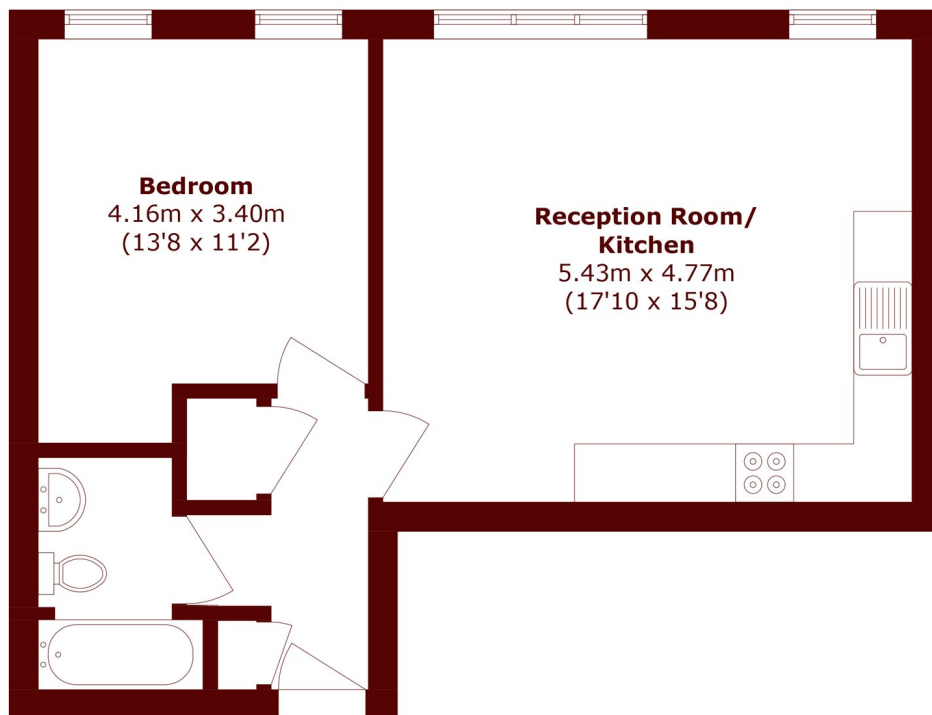
ABOUT THE PROPERTY

A 533 sq ft one double bedroom apartment with a spacious 18ft open plan reception room, communal roof terrace and private parking tucked away behind the vibrant St Johns Hill.

The flat is located on Rochelle Close, a quiet cul-de-sac located just off St. John's Hill with convenient access to both Clapham Junction and Wandsworth Town train stations.



STEP INSIDE ROCHELLE CLOSE



Total area (approx.): 49.5 sq. m (532.8 sq. ft)

Battersea
020 7326 9920

Energy Rating: C We aim to make our particulars both accurate and reliable. However, they are not guaranteed; nor do they form part of an offer or contract. If you require clarification on any points then please contact us, especially if you're traveling some distance to view. Please note that appliances and heating systems have not been tested and therefore no warranties can be given as to their good working order

**MARSH &
PARSONS**