



BLOMFIELD COURT, W9

£795 per week

Three bedrooms
Portered building
Wooden floors
Amazing location

@marshandparsons
marshandparsons.co.uk

MARSH &
PARSONS



ABOUT THE PROPERTY

This property boasts high ceilings and an abundance of natural light throughout. The well-presented accommodation comprises a large entrance hall which can be used as a dining area, a separate reception room and a stylish kitchen/breakfast room. The property also offers a master bedroom with an en suite bathroom, two further bedrooms and a family bathroom.

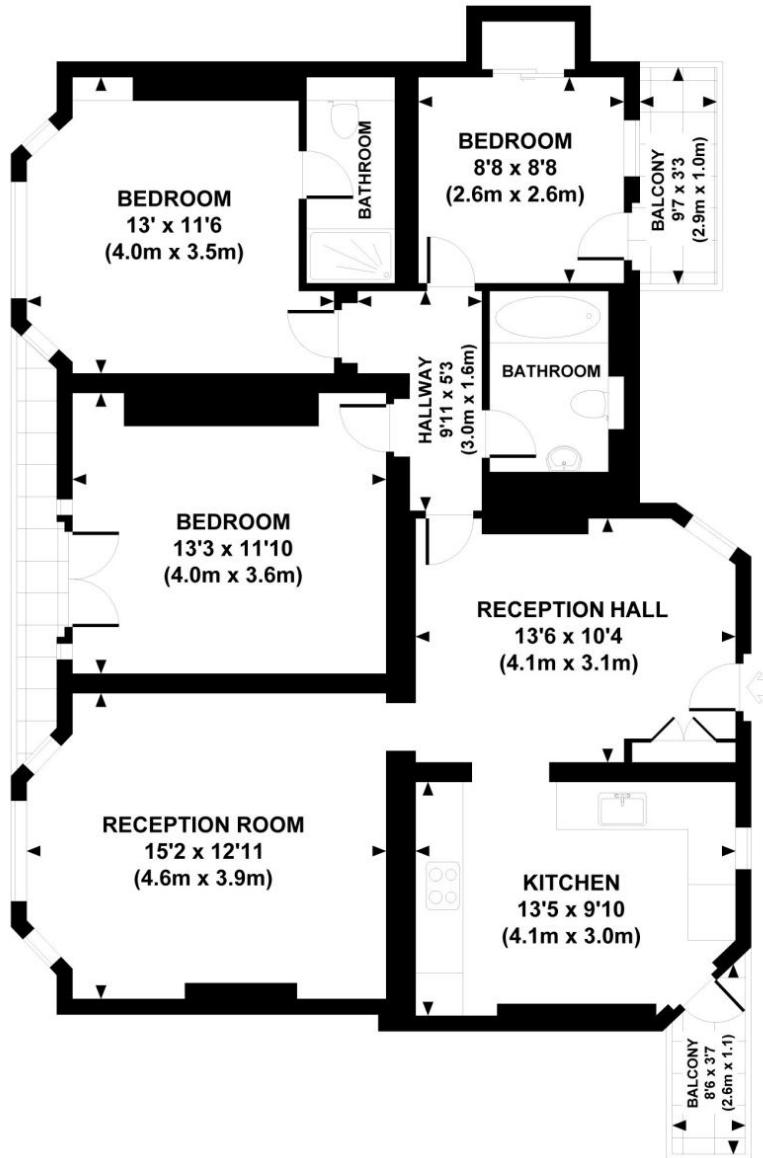
Blomfield Court is located moments from the amenities of Little Venice and close to the shops, bars and restaurants of Maida Vale, Warwick Avenue and St Johns Wood. There are convenient local transport links available at Warwick Avenue and Maida Vale which both offer the Bakerloo Line services on the London



STEP INSIDE BLOMFIELD COURT

BLOMFIELD COURT, W9

Approx. gross internal area
1111 Sq.Ft. / 103.2 Sq.M.



FOURTH FLOOR

 All measurements are approximate and for illustration purposes only as defined by the RICS Code of Measuring Practice © 2013 Dowling Jones Design www.dowlingjones.com 020 7610 9933

Little Venice
020 7993 3060

Energy Rating: C We aim to make our particulars both accurate and reliable. However, they are not guaranteed; nor do they form part of an offer or contract. If you require clarification on any points then please contact us, especially if you're traveling some distance to view. Please note that appliances and heating systems have not been tested and therefore no warranties can be given as to their good working order

MARSH &
PARSONS