



Kensington Park Gardens, W11

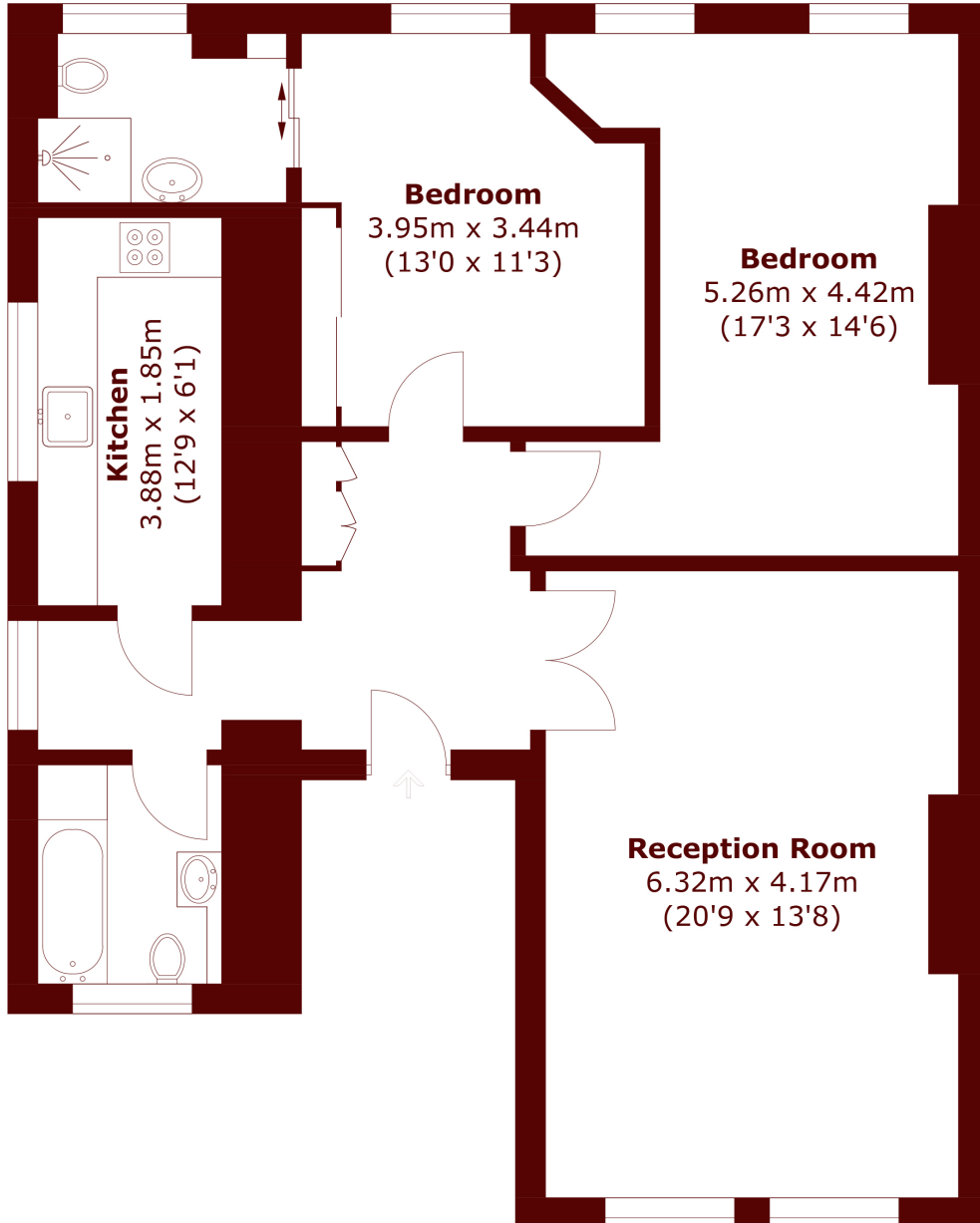
£1,250 per week (£5,416 pcm)



- Two Bedrooms
- Large Living Room

- Exacting Standard
- High Ceilings

- Communal Gardens
- Prestigious Location



Second Floor

Total area (approx.): 89.7 sq. m (965.5 sq. ft)

Marsh & Parsons Notting Hill

2-6 Kensington Park Road,
London, W11 3BU
020 7313 2890