



VICTORIA WAY, SE7

£300,000

Shared garden flat

One bedroom

Victorian

First floor

Chain free

Energy rating: d

@marshandparsons
marshandparsons.co.uk

MARSH &
PARSONS



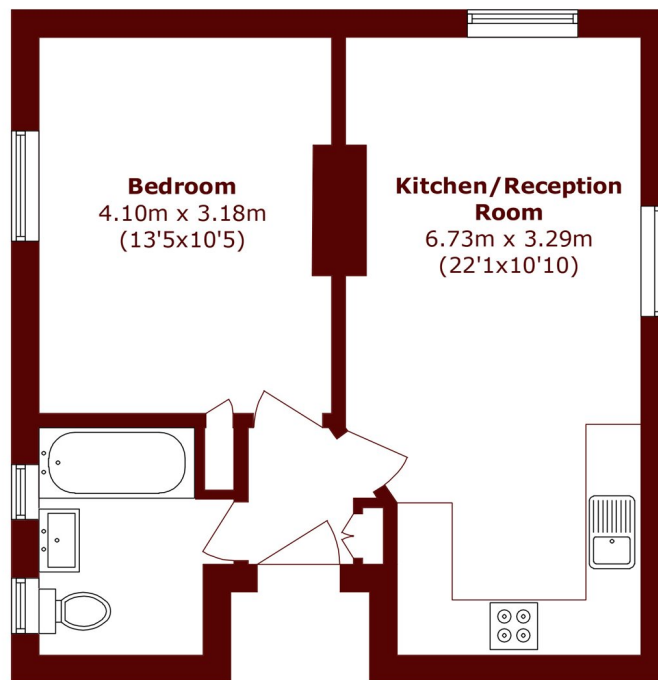
ABOUT THE PROPERTY

This freshly renovated one bedroom first floor flat has been modernised throughout to a high standard and offers bright, spacious accommodation. The property features a large open plan kitchen/living area, creating an ideal space for both relaxing and entertaining, alongside a newly fitted contemporary bathroom. The generous double bedroom provides excellent space and natural light, while the property forms part of an attractive Victorian conversion. Further benefits include access to a shared garden and convenient bike storage facilities.

Located on a sought-after Charlton road and is just minutes from Charlton station, with direct buses to North Greenwich and easy access to Greenwich Shopping Park.



STEP INSIDE VICTORIA WAY



Total area (approx.): 42.0 sq. m (452.0 sq. ft)

Charlton
020 8293 0454

Energy Rating: D We aim to make our particulars both accurate and reliable. However, they are not guaranteed; nor do they form part of an offer or contract. If you require clarification on any points then please contact us, especially if you're traveling some distance to view. Please note that appliances and heating systems have not been tested and therefore no warranties can be given as to their good working order

**MARSH &
PARSONS**