



BARTOK HOUSE, W11

£820,000

Two Double Bedrooms
Communal Garden Access
Garage
Fifth-Floor Apartment
Lift
Prime Location

@marshandparsons
marshandparsons.co.uk

MARSH &
PARSONS



ABOUT THE PROPERTY

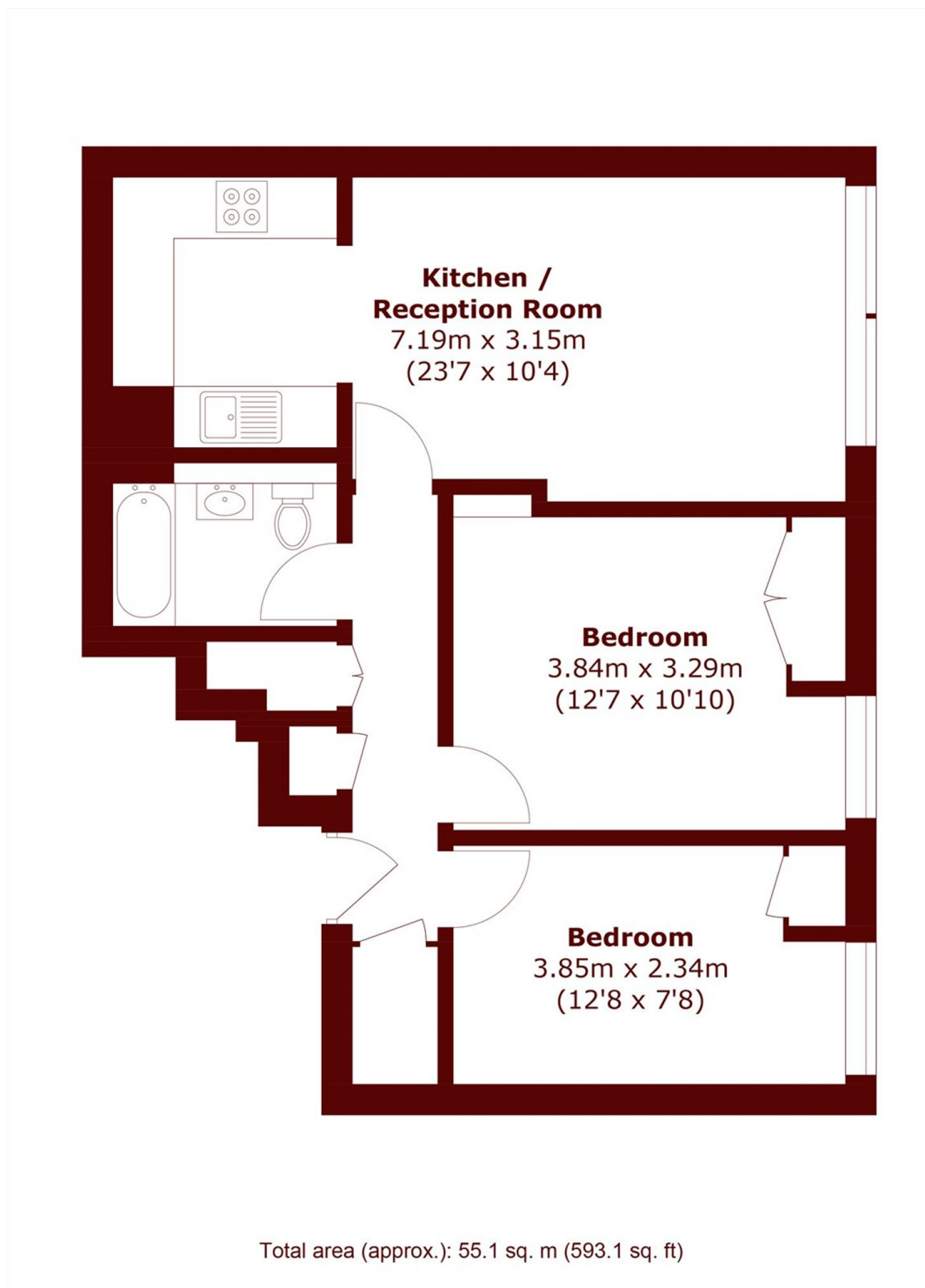
A stunning fifth-floor apartment (with lift) featuring floor-to-ceiling windows that flood the space with natural light and offer fantastic views.

Recently refurbished, it boasts two double bedrooms, a spacious open-plan reception and kitchen, a modern bathroom, and ample storage. Presented in excellent condition, this home is both stylish and functional.

Bartok House is located on Lansdowne Walk and benefits from access to beautiful communal gardens. Holland Park tube station is the nearest, being just a few minutes' walk away. Lansdowne Walk is extremely well located for all the shops on Holland Park Avenue.



STEP INSIDE BARTOK HOUSE



Holland Park
020 7605 6890

Energy Rating: We aim to make our particulars both accurate and reliable. However, they are not guaranteed; nor do they form part of an offer or contract. If you require clarification on any points then please contact us, especially if you're traveling some distance to view. Please note that appliances and heating systems have not been tested and therefore no warranties can be given as to their good working order

MARSH &
PARSONS