



CAVENDISH MANSIONS, SW12

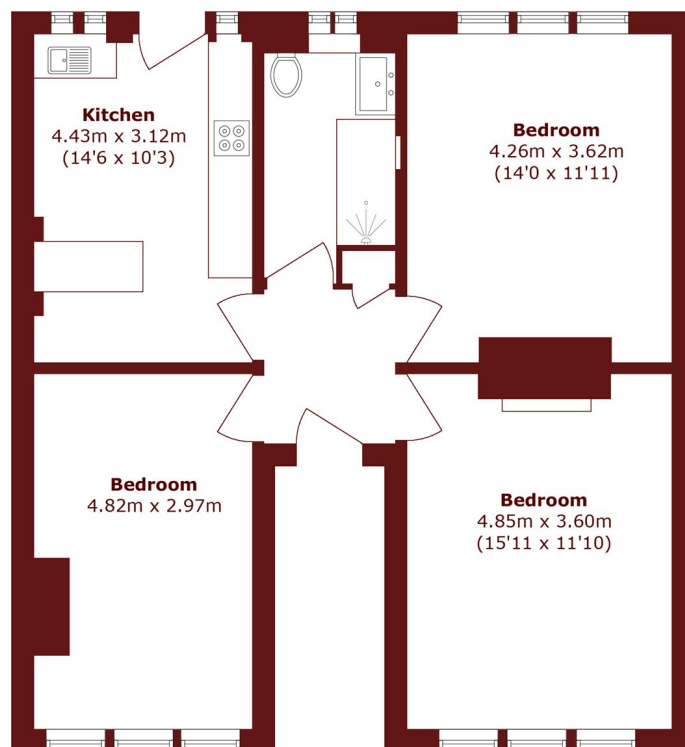
£3,400 per month

This lovely three bedroom apartment is set within a popular mansion block and has been beautifully refurbished throughout. Boasting wooden floors, three extra large double bedrooms, a separate eat-in kitchen with

Three bedrooms
Eat-in kitchen
Wooden floors

Modern
Clapham South
Energy rating: e.

STEP INSIDE CAVENDISH MANSIONS



Total area (approx.): 74.0 sq. m (796.5sq. ft)

Balham & Clapham South
020 8772 9200

Energy Rating: We aim to make our particulars both accurate and reliable. However, they are not guaranteed; nor do they form part of an offer or contract. If you require clarification on any points then please contact us, especially if you're traveling some distance to view. Please note that appliances and heating systems have not been tested and therefore no warranties can be given as to their good working order

**MARSH &
PARSONS**