

CROOMS HILL GROVE
GREENWICH, SE10

MARSH & PARSONS

WELCOME TO CROOMS HILL GROVE



ABOUT THE HOME

A charming three bedroom Victorian terraced house situated just off Crooms Hill in a quiet, tucked away cul-de-sac within a conservation area.

- Victorian home
- Three bedrooms
- Two reception rooms
- Private garden
- Nearby Greenwich Royal Park
- Excellent transport links







THE FINER DETAILS

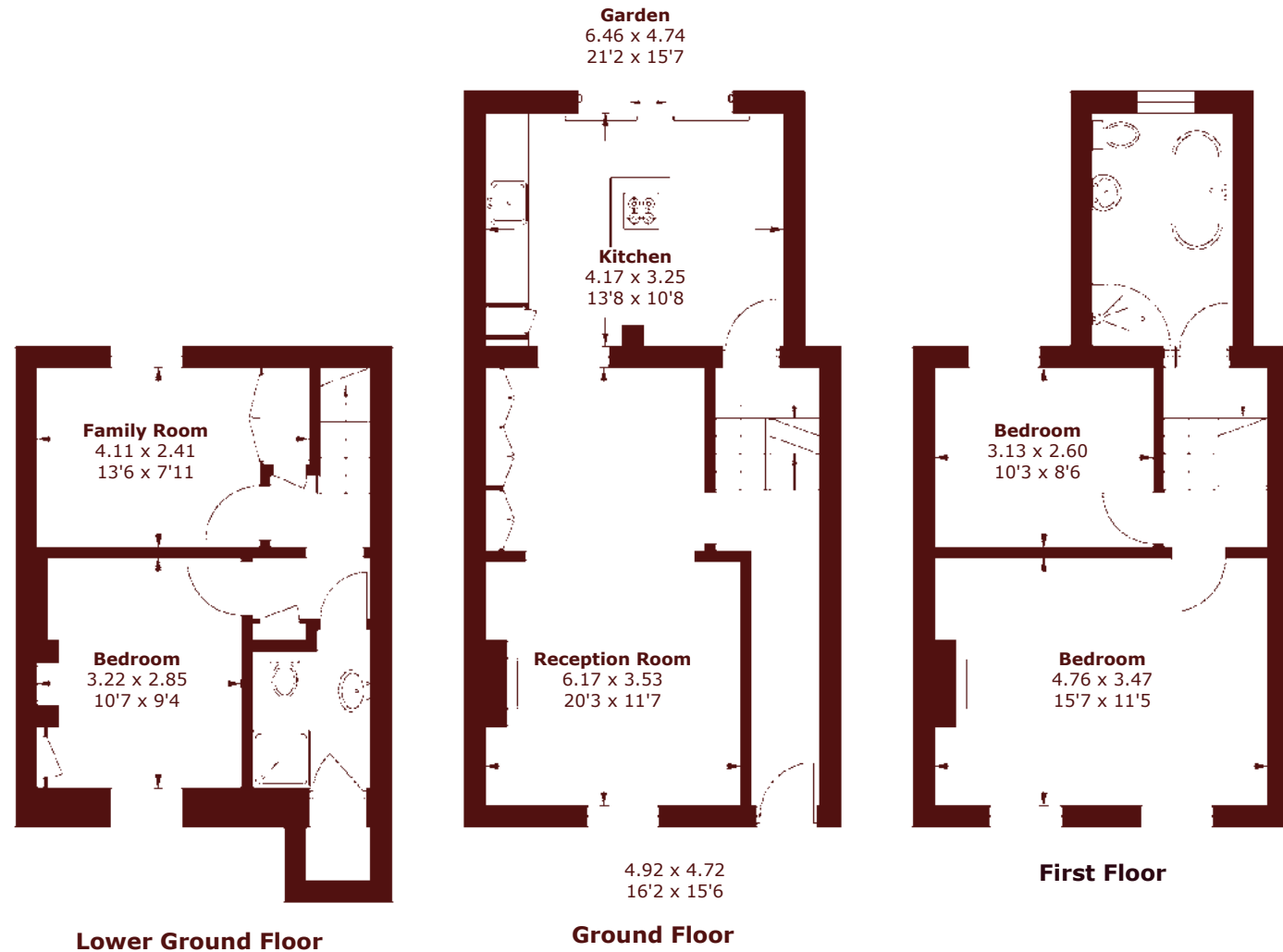
The property features a beautiful brick façade and is set across three floors, creating a blend of a modern and traditional feel. The upper ground floor has a spacious lounge, an impressive kitchen with an original exposed brick wall. The kitchen includes integrated appliances as well as bi-folding doors that lead into a south east facing private garden.

On the top floor, there are two double bedrooms and a family bathroom with a freestanding cast iron bath and separate shower. The lower ground floor offers two further bedrooms and a shower room, benefiting from ample storage, bespoke window shutters, period style radiators, a mix of fitted carpets, wood flooring, and sash windows.

Greenwich's Royal Park is nearby, as are Greenwich stations, the town centre, and an array of amenities.



STEP INSIDE CROOMS HILL GROVE



Greenwich
221 Greenwich High Road, SE10 8NB
Sales: 020 8312 8312

We aim to make our particulars both accurate and reliable. However, they are not guaranteed; nor do they form part of an offer or contract. If you require clarification on any points then please contact us, especially if you're traveling some distance to view. Please note that appliances and heating systems have not been tested and therefore no warranties can be given as to their good working order. EPC: C

Total approx. floor area: 848 sq. ft (78.8 sq. m)
Lower ground floor 306 sq. ft (28.4 sq. m)
Total 1,154 sq. ft (107.2 sq. m)

MARSH *&* PARSONS