



STANHOPE GARDENS, SW7

£675,000

Two-bedroom apartment
31 year lease
Views over private gardens
Bright and spacious
Lift and porter
Prime SW7 location

@marshandparsons
marshandparsons.co.uk

MARSH &
PARSONS



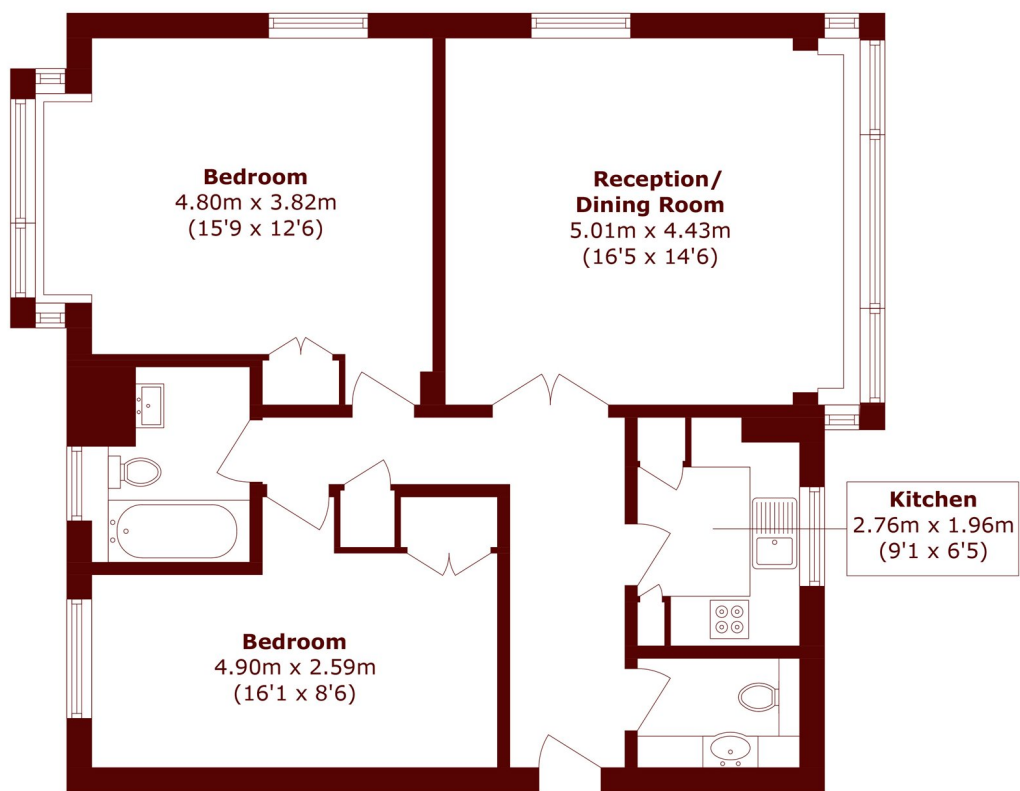
ABOUT THE PROPERTY

A beautifully bright two-bedroom apartment in the sought-after Derwent House, perfectly positioned in the heart of SW7. Overlooking the charming private garden square, the apartment enjoys lovely green views and a wonderfully peaceful feel throughout.

The property offers well-balanced living space with an abundance of natural light, making it an ideal London home or pied-à-terre. Residents also benefit from a lift and porter service, adding both convenience and security to this elegant South Kensington building.



STEP INSIDE STANHOPE GARDENS



Fourth Floor

Total area (approx.): 80.3 sq. m (864.3 sq. ft)

South Kensington
020 7590 0800

Energy Rating: We aim to make our particulars both accurate and reliable. However, they are not guaranteed; nor do they form part of an offer or contract. If you require clarification on any points then please contact us, especially if you're traveling some distance to view. Please note that appliances and heating systems have not been tested and therefore no warranties can be given as to their good working order

MARSH &
PARSONS