



## ESSENDINE MANSIONS, W9

£585,000

Period Mansion Block  
Open-Plan Living Room  
Fitted Kitchen  
Fitted wardrobe  
Fronting Paddington Recreation  
Grounds

@marshandparsons  
marshandparsons.co.uk

MARSH &  
PARSONS

# ABOUT THE PROPERTY

A delightful one-bedroom flat and modern comfort in a beautiful period mansion block, with peaceful views overlooking the park. An inviting open-plan reception, thoughtfully laid out for both living and dining. The fully fitted kitchen offers style and functionality. The bay-fronted bedroom features built-in wardrobes, providing practical storage. A sleek, modern bathroom completes the home with contemporary flair.

Perfectly positioned just steps away from Elgin Avenue and Lauderdale Road, this flat offers easy access to local cafés, delis, and excellent transport links. Maida Vale Tube Station (Bakerloo Line) is just a 5-minute walk



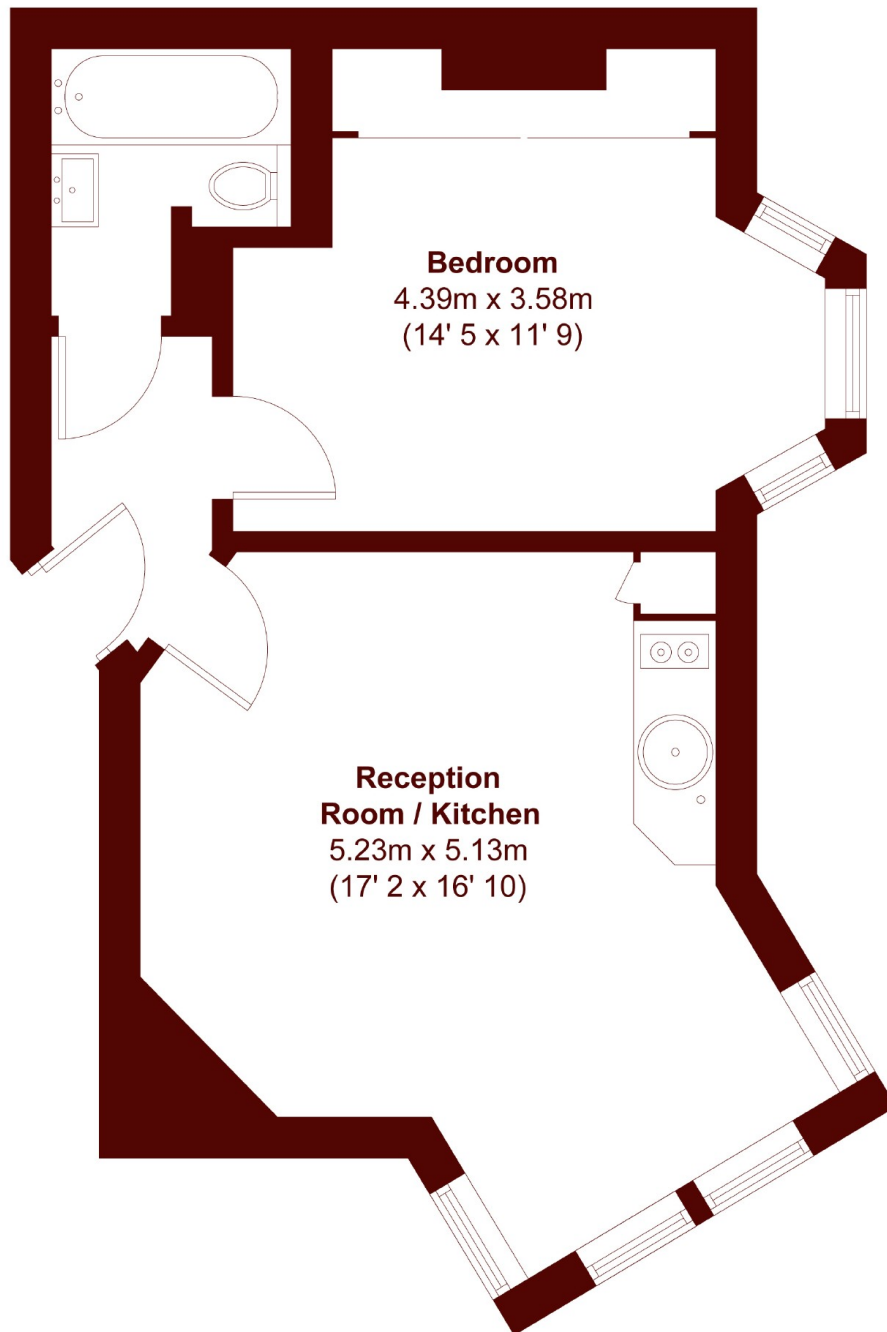




# FURTHER DETAILS



# STEP INSIDE ESSENDINE MANSIONS



APPROX. GROSS INTERNAL FLOOR AREA  
435 SQFT / 40.5 SQM

**Little Venice**  
020 7993 3050

Energy Rating: C We aim to make our particulars both accurate and reliable. However, they are not guaranteed; nor do they form part of an offer or contract. If you require clarification on any points then please contact us, especially if you're traveling some distance to view. Please note that appliances and heating systems have not been tested and therefore no warranties can be given as to their good working order

**MARSH &  
PARSONS**