



York Street, W1H

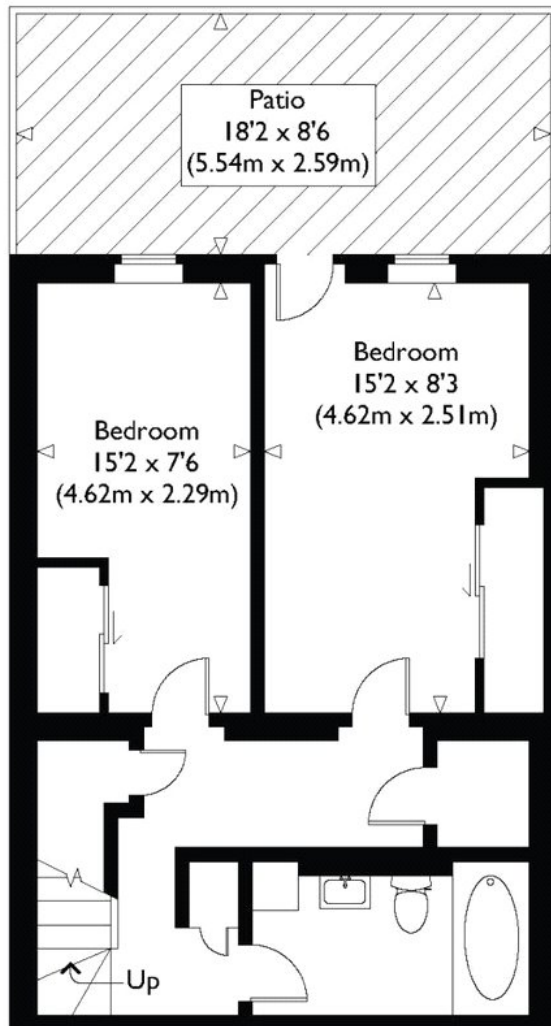
£1,153 per week



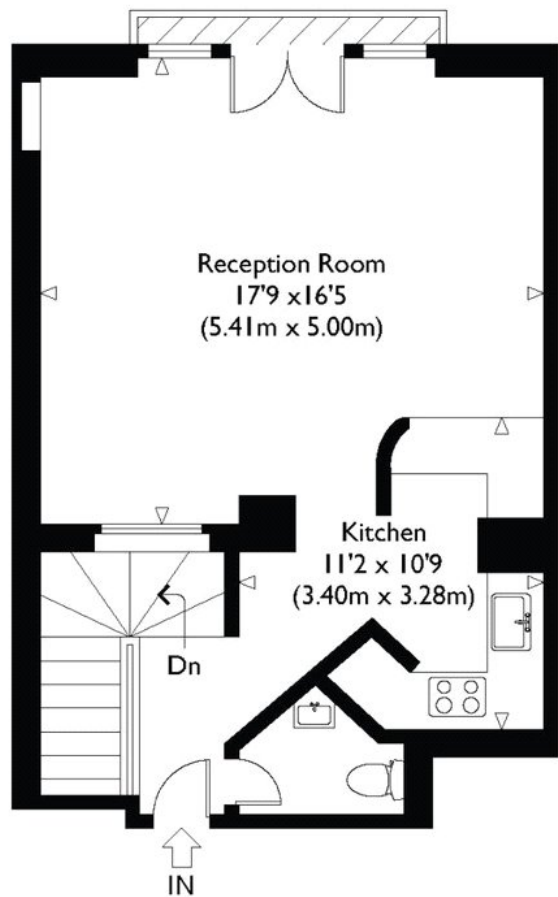
- Light and spacious
- Split over two floors
- Large Juliette balcony

York Street, W1

Approximate Gross Internal Floor Area : 904 sq ft / 84.0 sq m



Lower Ground Floor



Ground Floor

Illustration for identification purposes only, measurements are approximate, not to scale.

Marsh & Parsons Marylebone & Mayfair

94 Baker Street, London,
W1U 6FZ
020 7935 1775