



## SURCOT HOUSE, SW4

£565,000

Three double bedrooms  
Split level  
Private terrace  
Own entrance  
Close to transport links  
Leasehold

@marshandparsons  
marshandparsons.co.uk

MARSH &  
PARSONS



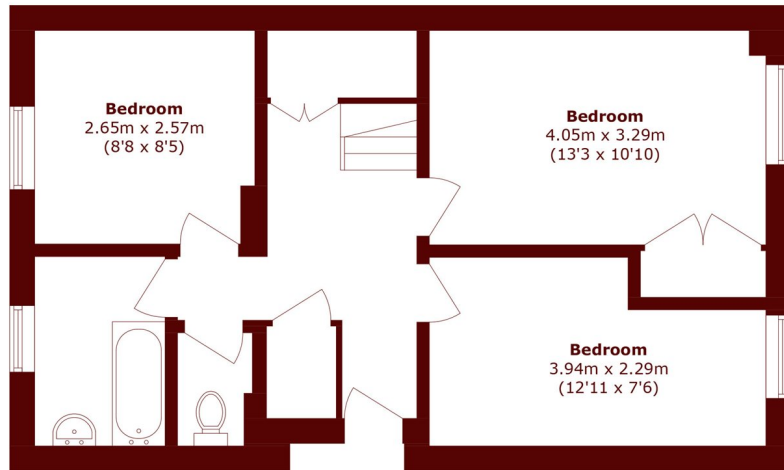
# ABOUT THE PROPERTY

A bright and spacious three bedroom maisonette with private roof terrace offering 857 sq ft of living space beautifully arranged over two floors and within close proximity to excellent transport links.

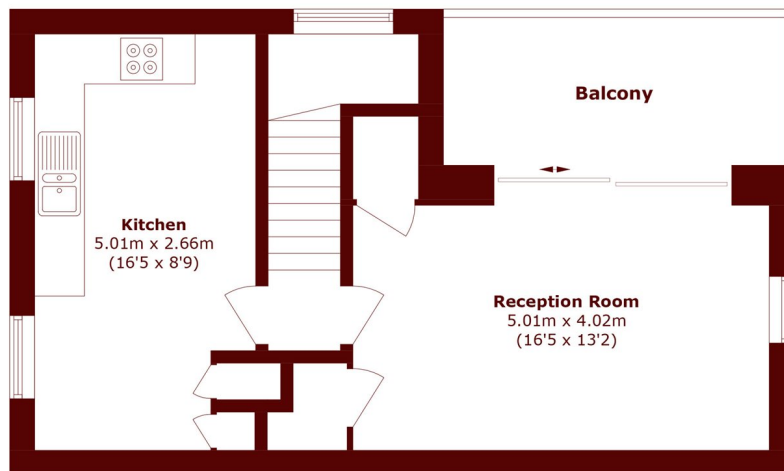
Surcot House is a purpose built development sitting peacefully on Union Road. A popular residential street well placed for the amenities of Clapham High Street and the wide open spaces of Clapham Common. One of the major advantages of this location is its close proximity to a multitude of transport options including: Clapham North Underground Station (Northern Line), Stockwell Underground Station (Northern & Victoria Lines) and Clapham High Street Overground Station.



# STEP INSIDE SURCOT HOUSE



**First Floor**



**Second Floor**

Total area (approx.): 79.7 sq. m (857.8 sq. ft)

Balcony area (approx.): 7.3 sq. m (78.5 sq. ft)

**Clapham**  
020 7501 3666

Energy Rating: We aim to make our particulars both accurate and reliable. However, they are not guaranteed; nor do they form part of an offer or contract. If you require clarification on any points then please contact us, especially if you're traveling some distance to view. Please note that appliances and heating systems have not been tested and therefore no warranties can be given as to their good working order

**MARSH &  
PARSONS**