



CLAPHAM COMMON NORTH SIDE, SW4

£725,000

Grade II Listed
Top floor flat
Two double bedrooms
Prime Old Town location
Gardens
View over Clapham Common

@marshandparsons
marshandparsons.co.uk

MARSH &
PARSONS



ABOUT THE PROPERTY

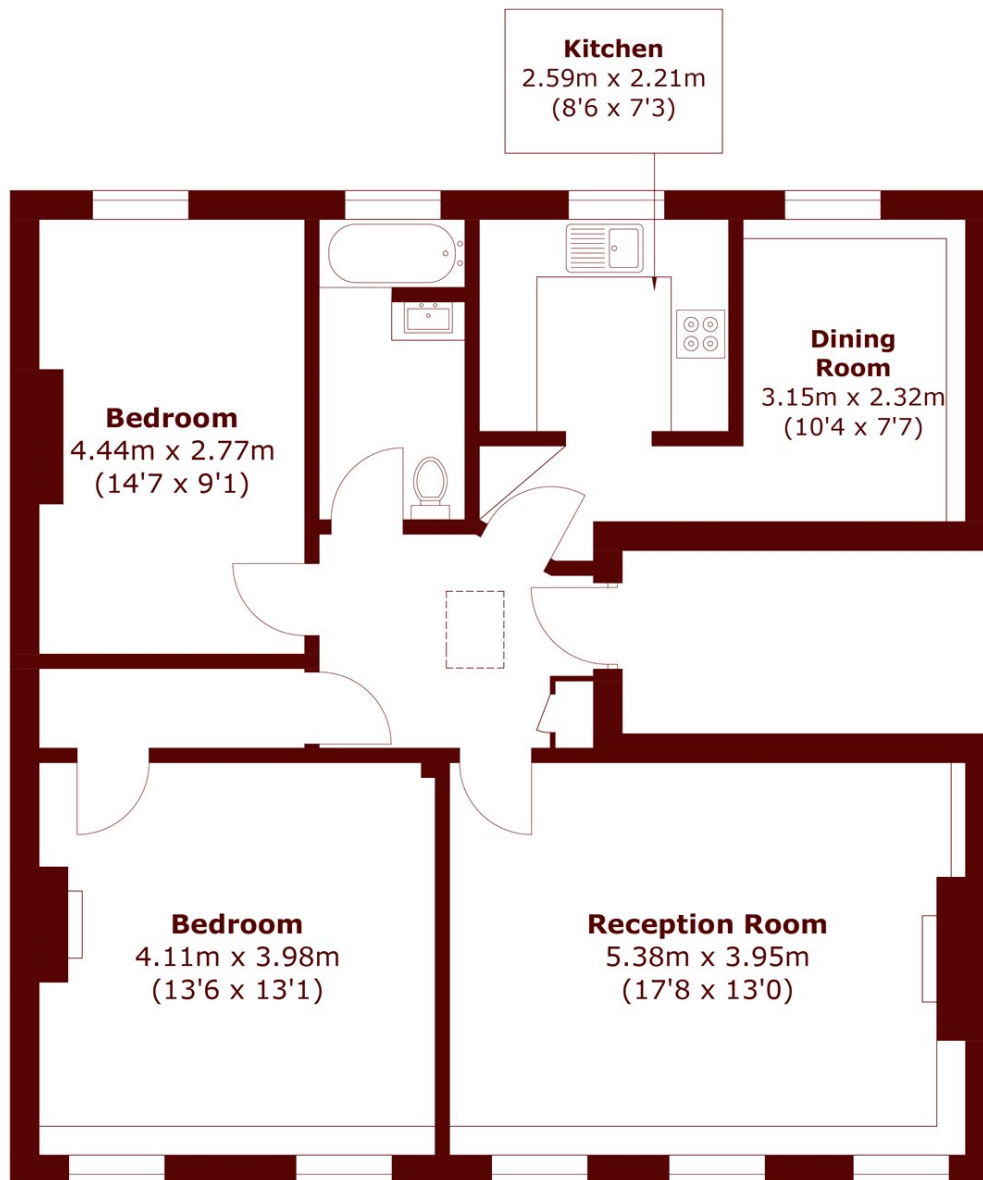
A spacious penthouse in a Grade II Listed Georgian house with two double bedrooms, large kitchen/diner, bright reception access to a large garden, and elegant period features.

This wonderful property is located on Clapham Common North Side opposite the Common and Holy Trinity Church. Local transport links include Clapham Common underground station (Northern line) which along with excellent local bus services, provide quick and easy access into the City, West End, Chelsea and Canary Wharf.



STEP INSIDE

CLAPHAM COMMON NORTH SIDE



Total area (approx.): 84.6 sq. m (910.6 sq. ft)

Clapham
020 7587 1533

Energy Rating: E We aim to make our particulars both accurate and reliable. However, they are not guaranteed; nor do they form part of an offer or contract. If you require clarification on any points then please contact us, especially if you're traveling some distance to view. Please note that appliances and heating systems have not been tested and therefore no warranties can be given as to their good working order

**MARSH &
PARSONS**