



## PORTOBELLO ROAD, W11

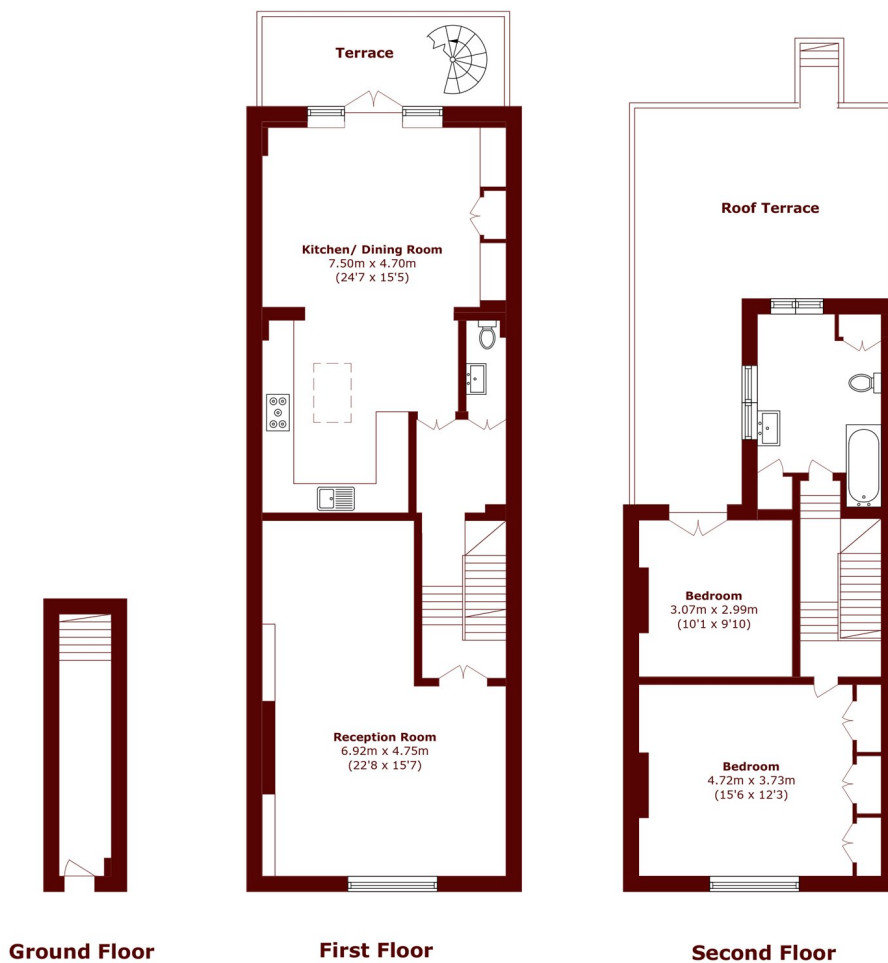
£1,200 per week (£5,200 per month)

An exceptionally spacious two double bedroom maisonette with a superb west-facing private decked terrace, ideally positioned in the heart of vibrant Portobello Road and moments from fashionable Westbourne

Two double bedrooms  
West facing terrace  
Wooden floors

Maisonette  
Plenty of natural light  
Iconic location

# STEP INSIDE PORTOBELLO ROAD



Total area (approx.): 117.3 sq. m (1262.6 sq. ft)

Terrace/Roof Terrace area (approx.): 35.0 sq. m (376.7 sq. ft)

Notting Hill  
020 7313 6910

Energy Rating: D We aim to make our particulars both accurate and reliable. However, they are not guaranteed; nor do they form part of an offer or contract. If you require clarification on any points then please contact us, especially if you're traveling some distance to view. Please note that appliances and heating systems have not been tested and therefore no warranties can be given as to their good working order

MARSH &  
PARSONS