



MANSON PLACE, SW7

£900,000

Lift
Two bedrooms
Two bathrooms
Separate kitchen
Great location
Energy rating d

@marshandparsons
marshandparsons.co.uk

MARSH &
PARSONS



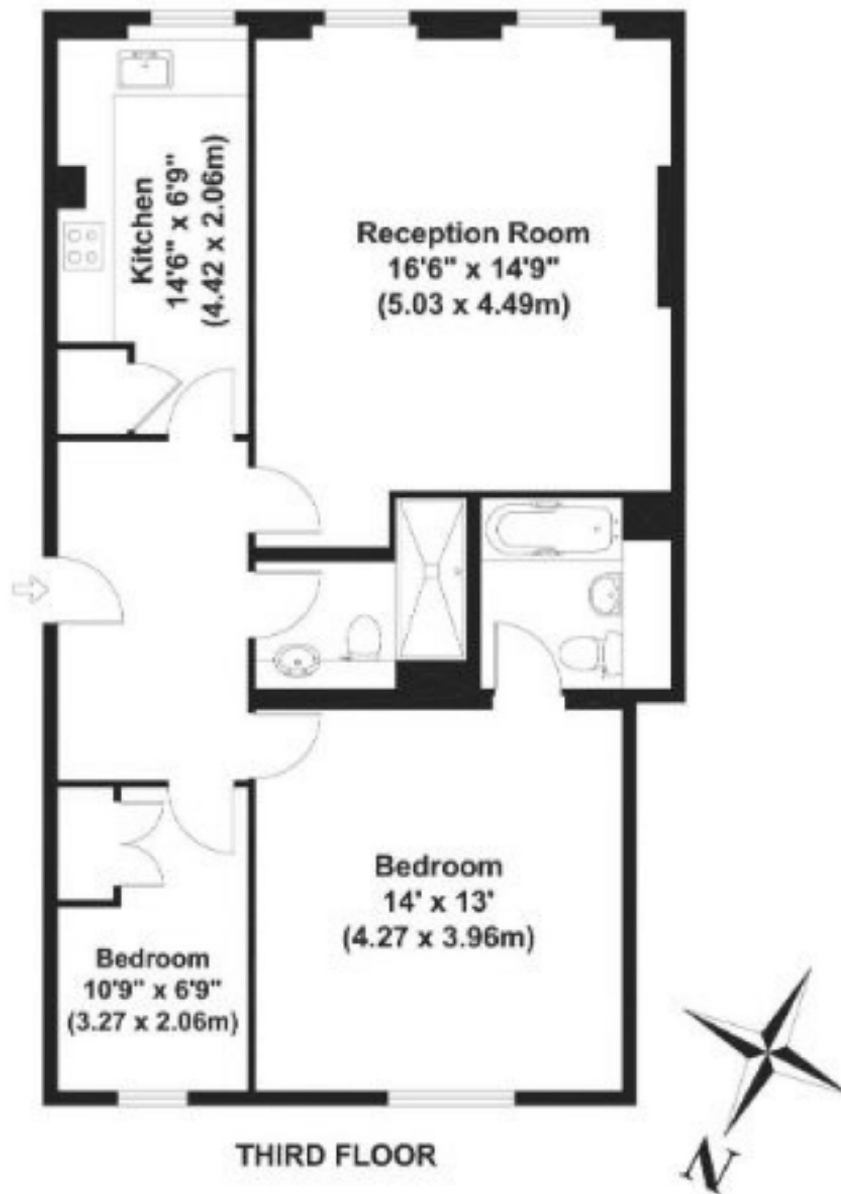
ABOUT THE PROPERTY

A large and spacious two bedroom apartment (with lift), two bathrooms and a separate kitchen located in a quiet cul-de-sac in the heart of South Kensington.

Manson Place is in close proximity to the many shops, bars, and restaurants in South Kensington and within easy reach of Hyde Park. The nearest stations are South Kensington and Gloucester Road for the Piccadilly, District and Circle Lines, while the motorist will find straightforward access to the A4 for a fast route into central London and to the M4, M25 and the West.



STEP INSIDE MANSON PLACE



APPROX. GROSS INTERNAL FLOOR AREA 784 SQ FT / 73 SQ M

South Kensington
020 7590 0800

Energy Rating: D We aim to make our particulars both accurate and reliable. However, they are not guaranteed; nor do they form part of an offer or contract. If you require clarification on any points then please contact us, especially if you're traveling some distance to view. Please note that appliances and heating systems have not been tested and therefore no warranties can be given as to their good working order

**MARSH &
PARSONS**