



HOWLEY PLACE, W2

£850,000

Period Conversion
First Floor Apartment
One Bedroom
Excellent Condition
Open Plan Living
Share of Freehold

@marshandparsons
marshandparsons.co.uk

MARSH &
PARSONS

ABOUT THE PROPERTY

A stunning first floor one bedroom apartment forming part of an elegant character conversion, beautifully refurbished to a high standard while retaining a wealth of charm and character. The exceptional triple aspect open-plan sitting room and kitchen is flooded with natural light and boasts high ceilings, an elegant feature fireplace and impressive proportions. The spacious double bedroom benefits from an extensive range of fitted wardrobes, completing this stylish and beautifully presented home.

Howley Place is tucked away within the charming residential streets of Little Venice, just moments from the tranquil canals and scenic towpaths of Grand Union Canal. The boutique cafés, restaurants, and shops of



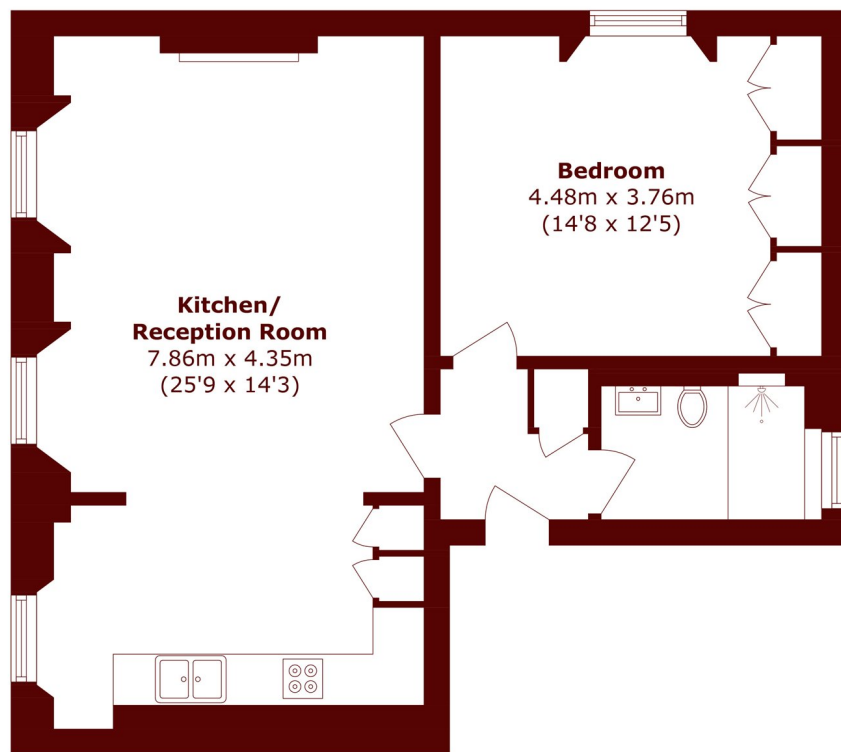




FURTHER DETAILS



STEP INSIDE HOWLEY PLACE



First Floor

Total area (approx.): 63.6 sq. m (684.6 sq. ft)

Little Venice
020 7993 3050

Energy Rating: We aim to make our particulars both accurate and reliable. However, they are not guaranteed; nor do they form part of an offer or contract. If you require clarification on any points then please contact us, especially if you're traveling some distance to view. Please note that appliances and heating systems have not been tested and therefore no warranties can be given as to their good working order

MARSH &
PARSONS