



EDGARLEY TERRACE, SW6

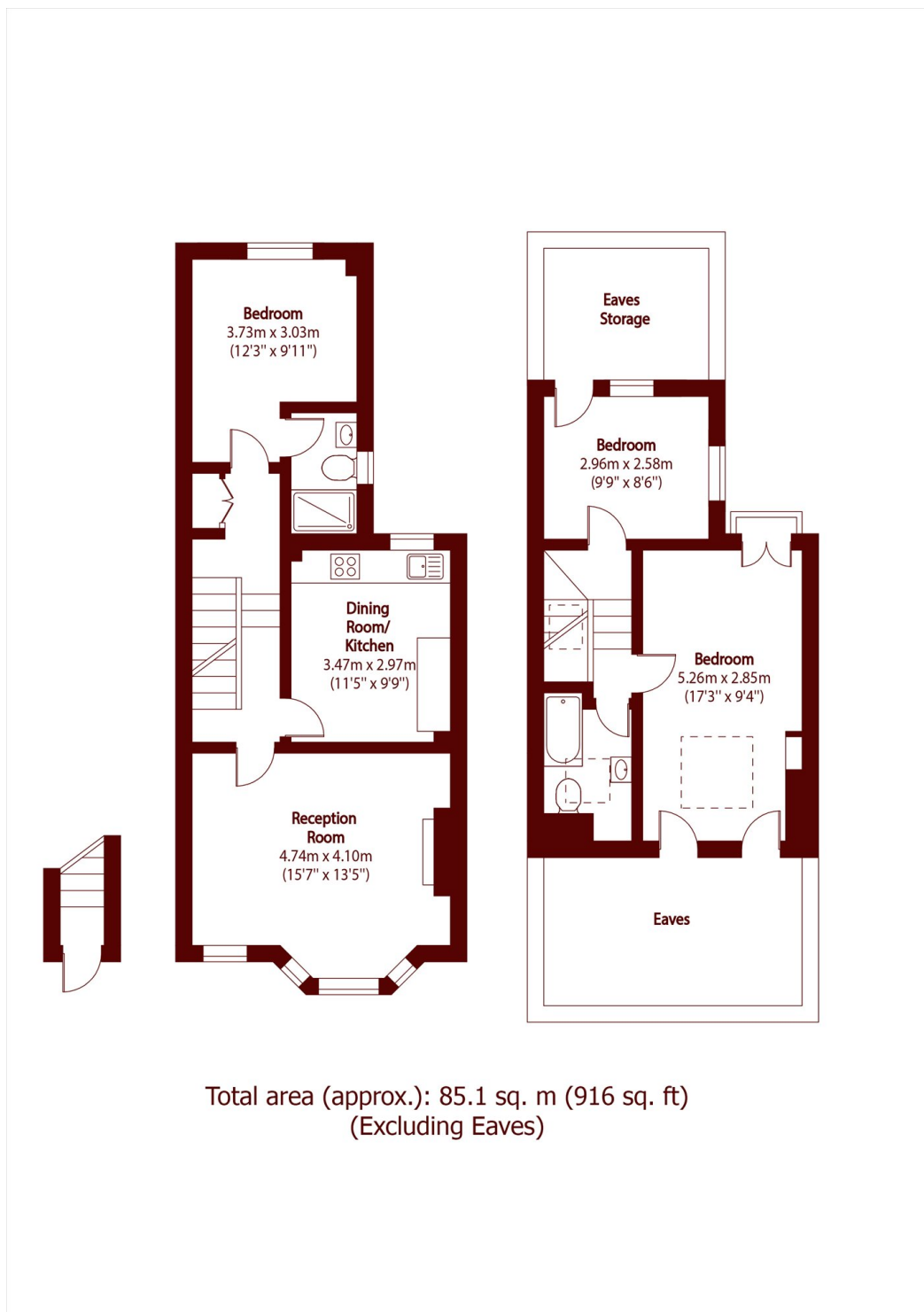
£3,600 per week

This extremely well-presented apartment is set over the first and second floors of a beautiful well-maintained Victorian house on an attractive, tree-lined street. The property comprises a bright and spacious reception

Three bedrooms
Two bathrooms

Separate kitchen
Short walk to Putney Bridge

STEP INSIDE EDGARLEY TERRACE



Bishops Park
020 7368 2480

Energy Rating: We aim to make our particulars both accurate and reliable. However, they are not guaranteed; nor do they form part of an offer or contract. If you require clarification on any points then please contact us, especially if you're traveling some distance to view. Please note that appliances and heating systems have not been tested and therefore no warranties can be given as to their good working order

**MARSH &
PARSONS**