



## RAVENSBOURNE PARK, SE6

£550,000

Two double bedrooms  
Two bathrooms  
Circa 940 sq ft  
Large private garden  
Off-street parking for two cars  
Chain free

@marshandparsons  
marshandparsons.co.uk

MARSH &  
PARSONS

# ABOUT THE PROPERTY

Set within the sought after Ravensbourne Park area of SE6, this rarely available two bedroom, two bathroom garden flat occupies the entire ground floor of a handsome semi-detached Victorian villa and is offered Chain Free. Offering in excess of 940 sq ft of beautifully proportioned living accommodation, combining period character with stylish modern finishes throughout.

Presented in excellent condition, this property boasts a particularly impressive layout, featuring a large kitchen/diner ideal for modern family living and entertaining, alongside a substantial separate reception room extending to over 20 ft in length, complete with an attractive bay window that floods the space with natural light.







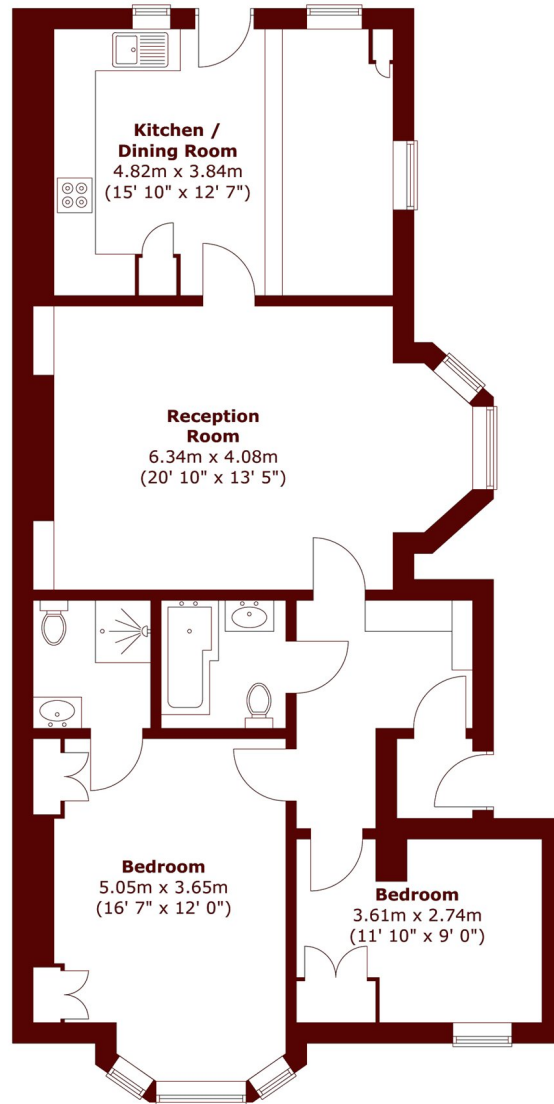
# FURTHER DETAILS

The accommodation further comprises two generous double bedrooms, including a principal bedroom with en-suite shower room, together with a stylish contemporary family bathroom. The overall layout provides an excellent balance of living and entertaining space, perfectly suited to both owner-occupiers and investors alike.

A standout feature of the property is the private rear garden, which enjoys sunlight throughout the day, creating a wonderful outdoor space for relaxing, dining and entertaining during the warmer months. The property further benefits from the increasingly hard-to-find advantage of off-street parking for two cars.



# STEP INSIDE RAVENSBOURNE PARK



Total area (approx.) : 87.6 sq. m (943 sq. ft)

**Brockley**  
020 8742 4113

Energy Rating: D We aim to make our particulars both accurate and reliable. However, they are not guaranteed; nor do they form part of an offer or contract. If you require clarification on any points then please contact us, especially if you're traveling some distance to view. Please note that appliances and heating systems have not been tested and therefore no warranties can be given as to their good working order

**MARSH &  
PARSONS**