



LORDS COURT, W6

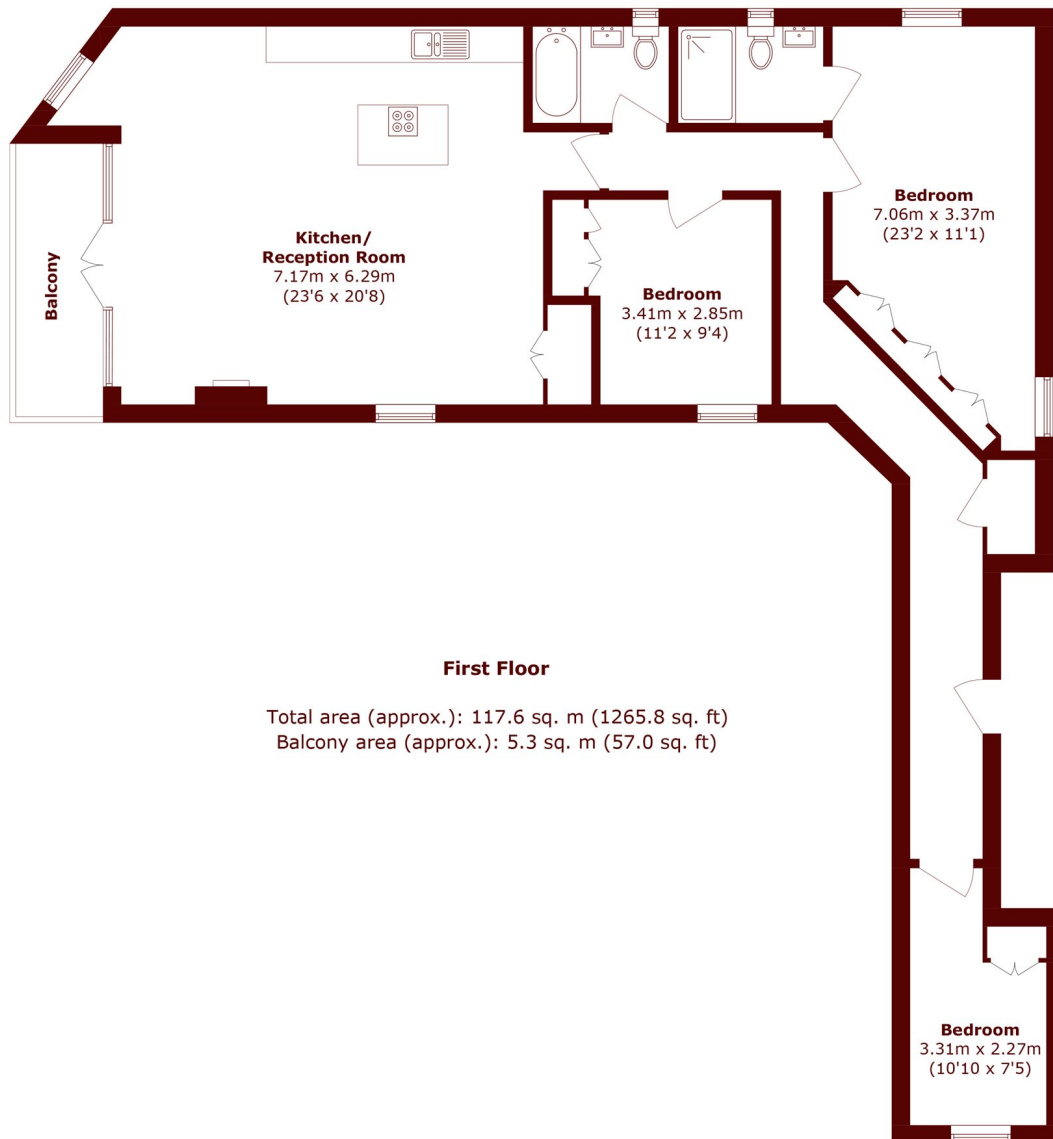
£4,000 per week

Conveniently located for both the river and the transport hub in Hammersmith, this spacious and well finished first floor, three-bedroom apartment in a modern warehouse style development benefits from under

New build flat
Three bedrooms

10 year new build guarantee
Hammersmith location

STEP INSIDE LORDS COURT



Bishops Park
020 7368 2480

Energy Rating: We aim to make our particulars both accurate and reliable. However, they are not guaranteed; nor do they form part of an offer or contract. If you require clarification on any points then please contact us, especially if you're traveling some distance to view. Please note that appliances and heating systems have not been tested and therefore no warranties can be given as to their good working order

**MARSH &
PARSONS**