



## BATTERSEA HIGH STREET, SW11

£2,500 per month

Two Double Bedrooms  
Two Bathrooms  
Communal Gardens  
Secure Fob Entry  
Great Transport Links  
Near Battersea Park

@marshandparsons  
marshandparsons.co.uk

MARSH &  
PARSONS



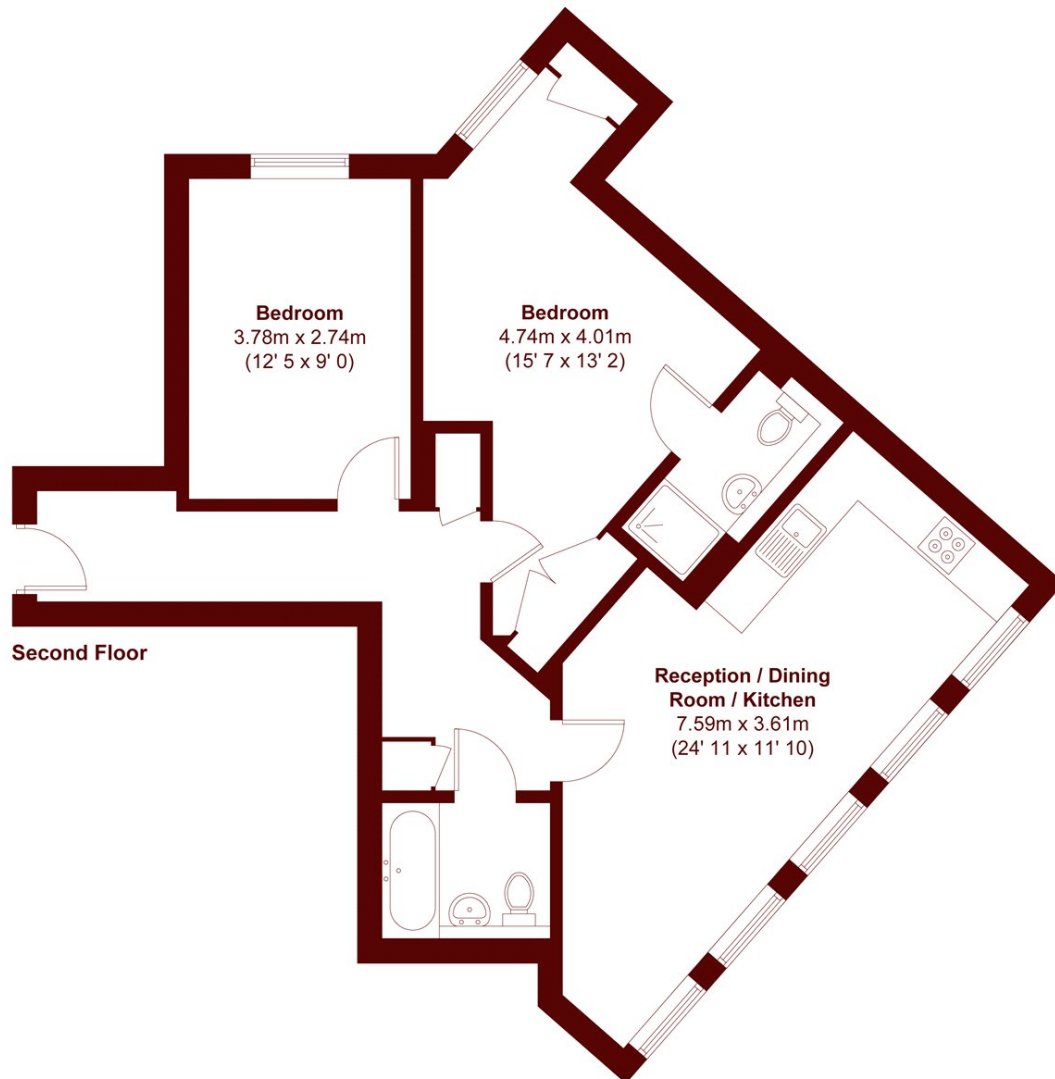
# ABOUT THE PROPERTY

A beautifully presented two-bedroom apartment located on the edge of Battersea Village within walking distance to Battersea Park.

A thriving local scene with Chelsea, Clapham, Wandsworth and Fulham on its doorstep, you're never far from world-class restaurants, bars, boutique shops and lush greenery courtesy of Battersea Park and both Clapham and Wandsworth Commons. Northcote Road is a ten-minute walk away, with the Kings Road in Chelsea located fifteen minutes away by bus. The iconic River Thames is just next to the property.



# STEP INSIDE BATTERSEA HIGH STREET



APPROX. GROSS INTERNAL FLOOR AREA  
744 SQFT / 69.1 SQM

**Battersea**  
020 7228 9292

Energy Rating: B We aim to make our particulars both accurate and reliable. However, they are not guaranteed; nor do they form part of an offer or contract. If you require clarification on any points then please contact us, especially if you're traveling some distance to view. Please note that appliances and heating systems have not been tested and therefore no warranties can be given as to their good working order

**MARSH &  
PARSONS**