



PENROSE MEWS, SW6

£4,500 per week (per month)

Three-bedroom
Three Bathroom
Roof terrace
Gated development
Newly Refurbished

@marshandparsons
marshandparsons.co.uk

MARSH &
PARSONS

ABOUT THE PROPERTY

A rare and exciting opportunity to rent a new build house in this brand new, secure, gated development with CCTV and state-of-the-art high speed fibre Internet, positioned in the heart of Fulham.

The house, split over three floors, comprises spacious reception room leading to a private patio, large eat-in kitchen with integrated appliances, large master bedroom with exceptional integrated storage and a generous modern en suite, a further three spacious bedrooms, second contemporary en suite bathroom and a further third modern shower room.

The property further benefits from a large and sunny roof



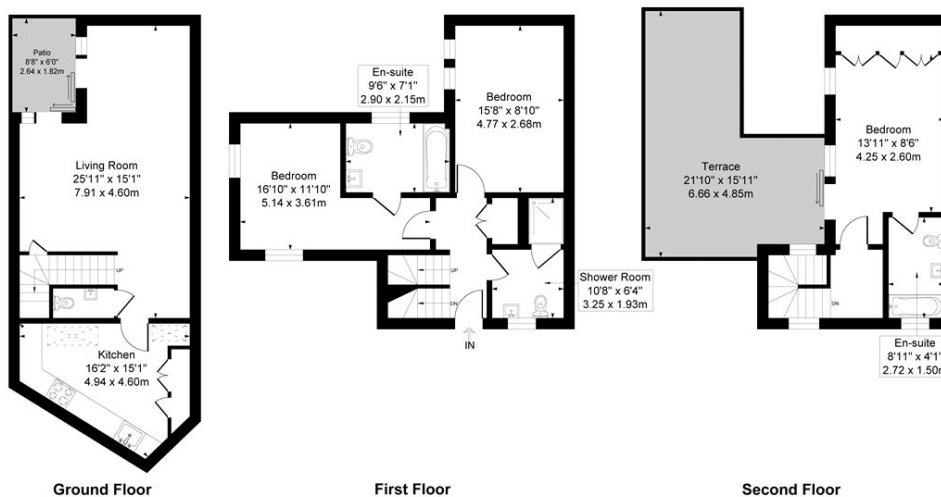




STEP INSIDE PENROSE MEWS

Lillie Road

Approximate Gross Internal Area = 117 sq m / 1259 sq ft



Measured in accordance with RICS guidelines. Every attempt is made to ensure accuracy
However all measurements are approximate.
The Floor plan is illustrative purposes Only and is not to scale
ELLIE CLAIRE PHOTOGRAPHY LTD

Bishops Park
020 7368 2480

Energy Rating: We aim to make our particulars both accurate and reliable. However, they are not guaranteed; nor do they form part of an offer or contract. If you require clarification on any points then please contact us, especially if you're traveling some distance to view. Please note that appliances and heating systems have not been tested and therefore no warranties can be given as to their good working order

**MARSH &
PARSONS**