



LADBROKE SQUARE, W11

£4,117 per month

A spectacular one bedroom top floor apartment benefiting from panoramic views within a grand period building in prime Notting Hill

One bedroom

Spectacular views

Private communal gardens

High ceilings

Prime Notting Hill

EPC - E

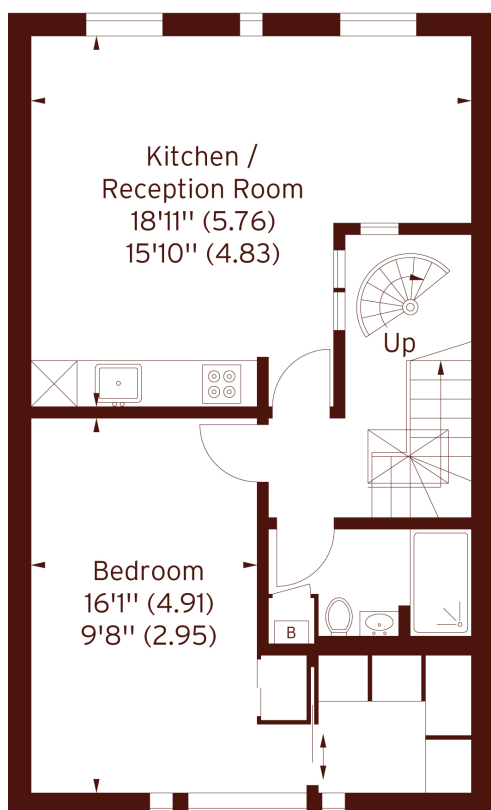
@marshandparsons
marshandparsons.co.uk

MARSH &
PARSONS

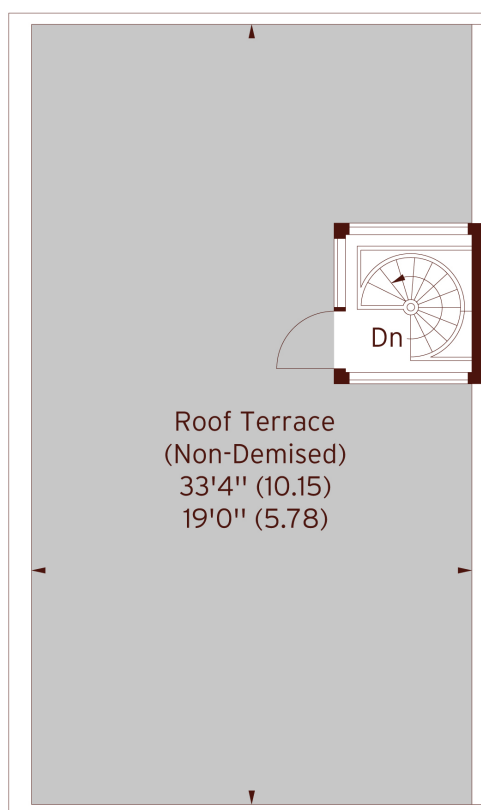
STEP INSIDE LADBROKE SQUARE

Ladbroke Square, W11

APPROX. GROSS INTERNAL FLOOR AREA 645 SQFT / 59.9 SQM



FOURTH FLOOR



FIFTH FLOOR

The floor plan is not to scale and measurements and areas shown are approximate and therefore should be used for illustrative purposes only. The plan has been prepared in accordance with the RICS code of measuring Practice and whilst we have confidence in the information produced, it must not be relied on. If there is any aspect of particular importance, you should carry out or commission your own inspection of the property.

Notting Hill
020 7313 6910

Energy Rating: E We aim to make our particulars both accurate and reliable. However, they are not guaranteed; nor do they form part of an offer or contract. If you require clarification on any points then please contact us, especially if you're traveling some distance to view. Please note that appliances and heating systems have not been tested and therefore no warranties can be given as to their good working order

MARSH &
PARSONS